

## 32-17104: Recombinant Human IgG1-Fc Protein

**Alternative Name :** IgG1 Fc Protein

### Description

Expression Host : HEK293

The protein has a predicted molecular mass of 27.7 kDa after removal of the signal peptide. The apparent molecular mass of IgG1-Fc is approximately 30-40 kDa due to glycosylation.

IGHG1 (Immunoglobulin Heavy Constant Gamma 1 (G1m Marker)) is a Protein Coding gene. Diseases associated with IGHG1 include Leukemia, Chronic Lymphocytic and Heavy Chain Deposition Disease. Among its related pathways are Interleukin-4 and 13 signaling and IL4-mediated signaling events. Gene Ontology (GO) annotations related to this gene include antigen binding. An important paralog of this gene is IGHG3.

### Product Info

<b>Amount :</b>	50 µg
<b>Purification :</b>	The purity of the protein is greater than 95% as determined by SDS-PAGE and Coomassie blue staining.
<b>Content :</b>	Lyophilized from sterile PBS, pH 7.4. Normally 5 % - 8 % trehalose is added as protectants before lyophilization.
<b>Storage condition :</b>	Store at -80°C for 12 months (Avoid repeated freezing and thawing)

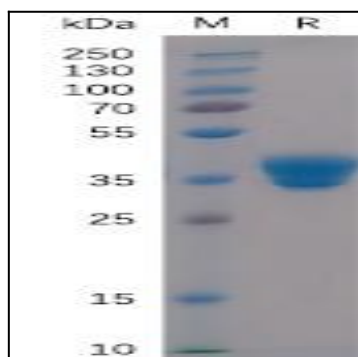


Figure 1. Human IgG1-Fc Protein on SDS-PAGE under reducing condition.