

## 32-17118: Recombinant human EGFR Protein with C-6 $\times$ His tag

**Alternative Name :** EGFR,ERBB,ERBB1,HER1,PIG61,mENA

### Description

Expression Host : HEK293

The protein has a predicted molecular mass of 69.4 kDa after removal of the signal peptide. The apparent molecular mass of EGFR-His is approximately 100-130 kDa due to glycosylation.

The protein encoded by this gene is a transmembrane glycoprotein that is a member of the protein kinase superfamily. This protein is a receptor for members of the epidermal growth factor family. EGFR is a cell surface protein that binds to epidermal growth factor. Binding of the protein to a ligand induces receptor dimerization and tyrosine autophosphorylation and leads to cell proliferation. Mutations in this gene are associated with lung cancer.

### Product Info

<b>Amount :</b>	50 $\mu$ g
<b>Purification :</b>	The purity of the protein is greater than 95% as determined by SDS-PAGE and Coomassie blue staining.
<b>Content :</b>	Lyophilized from sterile PBS, pH 7.4. Normally 5 % - 8 % trehalose is added as protectants before lyophilization.
<b>Storage condition :</b>	Store at -80°C for 12 months (Avoid repeated freezing and thawing)

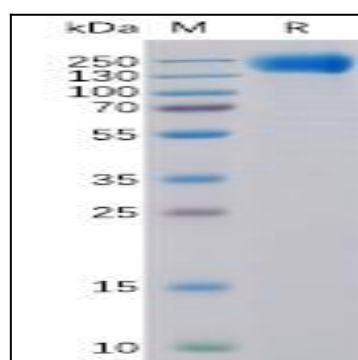


Figure 1. Human EGFR Protein, His Tag on SDS-PAGE under reducing condition.

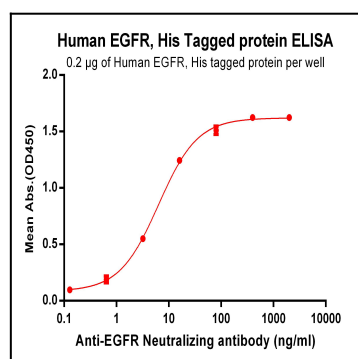


Figure 2. ELISA plate pre-coated by 2  $\mu$ g/ml (100  $\mu$ l/well) Human EGFR, His tagged protein can bind Anti-EGFR Antibody in a linear range of 0.64-80.0 ng/ml.