

## 32-17125: Recombinant Human IL6R Protein with C-terminal 6 $\times$ His tag

**Alternative Name :** CD126; gp80; IL-6R-1; IL-6RA; IL6Q; IL6RA; IL6RQ

### Description

Expression Host : HEK293

The protein has a predicted molecular mass of 39.4 kDa after removal of the signal peptide. The apparent molecular mass of IL6R-His is approximately 55-70 kDa due to glycosylation.

This gene encodes a subunit of the interleukin 6 (IL6) receptor complex. Interleukin 6 is a potent pleiotropic cytokine that regulates cell growth and differentiation and plays an important role in the immune response. The IL6 receptor is a protein complex consisting of this protein and interleukin 6 signal transducer (IL6ST/GP130/IL6-beta), a receptor subunit also shared by many other cytokines. Dysregulated production of IL6 and this receptor are implicated in the pathogenesis of many diseases, such as multiple myeloma, autoimmune diseases and prostate cancer. Alternatively spliced transcript variants encoding distinct isoforms have been reported. A pseudogene of this gene is found on chromosome 9.

### Product Info

<b>Amount :</b>	50 $\mu$ g
<b>Purification :</b>	The purity of the protein is greater than 95% as determined by SDS-PAGE and Coomassie blue staining.
<b>Content :</b>	Lyophilized from sterile PBS, pH 7.4. Normally 5 % - 8 % trehalose is added as protectants before lyophilization.
<b>Storage condition :</b>	Store at -80°C for 12 months (Avoid repeated freezing and thawing)

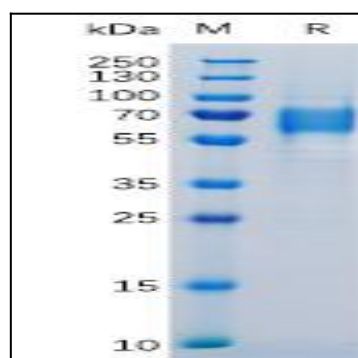


Figure 1. Human IL6R Protein, His Tag on SDS-PAGE under reducing condition.

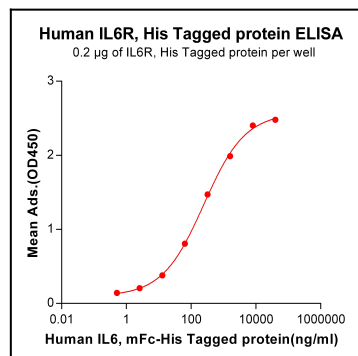


Figure 2. ELISA plate pre-coated by 2  $\mu$ g/ml (100  $\mu$ l/well) Human IL6R, His tagged protein can bind Human IL6, mFc-His tagged protein in a linear range of 0.512-40000 ng/ml.