

30-2496: Anti-Human SIGLEC8 Antibody (Clone : 7C9)

Clonality :	Monoclonal
Clone Name :	7C9
Application :	FACS , ELISA, IP
Reactivity :	Human
Gene :	SIGLEC8
Gene ID :	27181
Format :	Purified
Alternative Name :	SAF2,sialic acid binding Ig like lectin 8
Isotype :	Mouse IgG1
Immunogen Information :	Extracellular domain of human SIGLEC8 fused with Fc fragment of human IgG1

Description

SIGLEC8 is a sialic acid binding lectin similar to CD33. In its cytoplasmic domain it contains an immunoreceptor tyrosine-based inhibitory motif (ITIM), and a motive similar to a binding site for SLAM-associated protein. SIGLEC8 is expressed e.g. in lymph nodes and spleen. It is an eosinophil marker, although it can be found also on the surface of mast cells. Crosslinking of SIGLEC8 leads to apoptosis. Soluble form of SIGLEC8 can be found in human serum, especially in case of eosinophil-associated diseases.

Specificity : The mouse monoclonal antibody 7C9 recognizes an extracellular epitope of SIGLEC8, an eosinophil marker, expressed e.g. in lymph nodes and spleen.

Product Info

Amount :	0.1 mg
Purification :	Purified by protein-A affinity chromatography
Content :	1 mg/ml Formulation : Phosphate buffered saline (PBS) solution with 15 mM sodium azide
Storage condition :	Store at 2-8°C. Do not freeze.

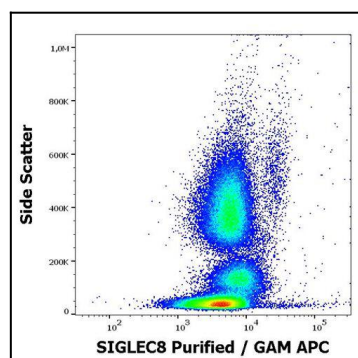


Figure 1 : Flow cytometry surface staining pattern of human peripheral whole blood stained using anti-human SIGLEC8 (7C9) purified antibody (concentration in sample 6 µg/ml; GAM APC).