

30-2529: Anti-GRAP2 PE (Clone : UW40)

| | |
|--------------------------------|--|
| Clonality : | Monoclonal |
| Clone Name : | UW40 |
| Application : | FACS |
| Reactivity : | Human |
| Conjugate : | PE |
| Gene : | GRAP2 |
| Gene ID : | 9402 |
| Alternative Name : | GADS, GRID, GRAP-2, GrbX, GRB2 related adaptor protein 2 |
| Isotype : | Mouse IgG2a |
| Immunogen Information : | GST-fusion human GRAP2/GADS protein |

Description

GRAP2/GADS (Grb2-related adaptor protein 2 / Grb2-related adaptor downstream of Shc) is a cytoplasmic adaptor protein containing N- and C-terminal SH3 domains flanking a central SH2 domain and a proline/glutamine-rich region. It is expressed predominantly in lymphoid tissue and hematopoietic cells, particularly in T cells. GRAP2/GADS plays a pivotal role during the early events of T cell signal transduction by recruiting the adaptor protein SLP-76 and its associated molecules, such as Vav, Nck, Itk, and ADAP, to the transmembrane adaptor protein LAT. GRAP2/GADS also binds several other signaling proteins, namely Gab2, HPK1 (hematopoietic progenitor kinase 1), and Cbl. Unlike similar adaptor protein Grb2, GRAP2/GADS shows higher selectivity when binding to the particular phosphorylated tyrosines of LAT adaptor.

Specificity : The mouse monoclonal antibody UW40 recognizes GRAP2/GADS, a 41 kDa cytoplasmic adaptor protein that plays a pivotal role during the early events of signal transduction in T cells.

Product Info

| | |
|----------------------------|---|
| Amount : | 0.1 mg |
| Purification : | The purified antibody is conjugated with R-phycoerythrin (PE) under optimum conditions. The conjugate is purified by size-exclusion chromatography. |
| Content : | 0.1 mg/ml Formulation : Stabilizing phosphate buffered saline (PBS) solution containing 15 mM sodium azide |
| Storage condition : | Store in the dark at 2-8°C. Do not freeze. Avoid prolonged exposure to light. |

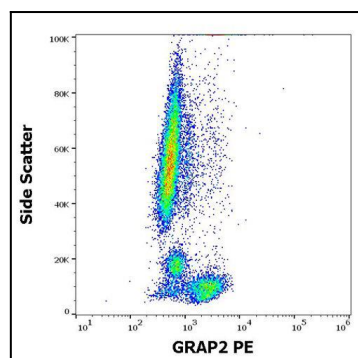


Figure 1 : Flow cytometry intracellular staining pattern of human peripheral whole blood stained using anti-human GRAP2(UW40) PE antibody (concentration in sample 1,7 µg/ml).

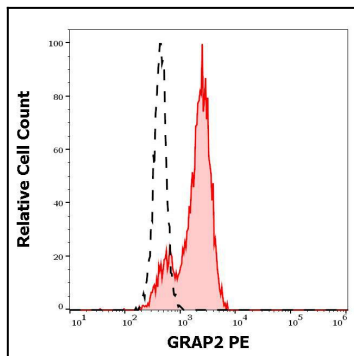


Figure 2 : Separation of lymphocytes stained using anti-human GRAP2 (UW40) PE antibody (concentration in sample 1,7 µg/ml, red-filled) from lymphocytes stained using mouse IgG2a isotype control (MOPC-173) PE antibody (concentration in sample 1,7 µg/ml, same as GRAP2 PE concentration, black-dashed) in flow cytometry analysis (intracellular staining) of peripheral blood.