

### 30-2532PE: PE Conjugated Anti-DLL4 (Clone : MHD4-46)

<b>Clonality :</b>	Monoclonal
<b>Clone Name :</b>	MHD4-46
<b>Application :</b>	FACS
<b>Reactivity :</b>	Human
<b>Conjugate :</b>	PE
<b>Gene :</b>	DLL4
<b>Gene ID :</b>	54567
<b>Alternative Name :</b>	Delta like ligand 4, AOS6, canonical Notch ligand 4, delta like canonical Notch ligand 4
<b>Isotype :</b>	Mouse IgG1 kappa
<b>Immunogen Information :</b>	recombinant soluble human DLL4

### Description

DLL4 (Delta-like 4) is one of five ligands of Notch receptors. It interacts with Notch1 and Notch4. DLL4 is up-regulated at sites of physiologic and pathologic angiogenesis, whereas its expression is low in most adult normal tissues. It is also highly expressed in human clear-cell renal carcinomas, bladder cancers, and breast cancers. Blocking the DLL4-Notch interaction seems to be a promising therapeutic approach.

**Specificity :** The mouse monoclonal antibody MHD4-46 recognizes the extracellular domain of DLL4 (Delta-like ligand 4), a type I transmembrane protein which plays an important role in vascular development.

### Product Info

<b>Amount :</b>	0.1 mg
<b>Purification :</b>	The purified antibody is conjugated with R-phycoerythrin (PE) under optimum conditions. The conjugate is purified by size-exclusion chromatography.
<b>Content :</b>	0.1 mg/ml Formulation : Stabilizing phosphate buffered saline (PBS) solution containing 15 mM sodium azide
<b>Storage condition :</b>	Store in the dark at 2-8°C. Do not freeze. Avoid prolonged exposure to light.

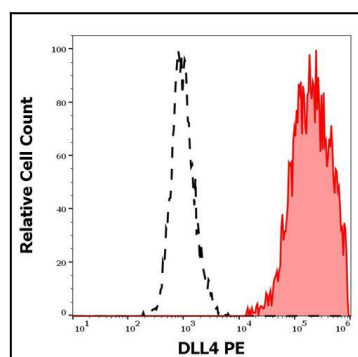


Figure 1 : Separation of CHO/DLL4 cells stained using anti-human DLL4 (MHD4-46) PE antibody (10 µl reagent per million cells in 100 µl of cell suspension, red-filled) from CHO/DLL4 cells stained using mouse IgG1 isotype control (MOPC-21) PE antibody (concentration in sample 1 µg/ml, same as CD135 APC concentration, black-dashed) in flow cytometry analysis (surface staining) of CHO/DLL4 cell suspension.