

Figure 2 : Flow cytometry multicolor surface staining pattern of human lymphocytes using anti-human CD73 (AD2) APC antibody (10  $\mu$ l reagent / 100  $\mu$ l of peripheral whole blood) and anti-human CD19 (LT19) PE antibody (20  $\mu$ l reagent / 100  $\mu$ l of peripheral whole blood).

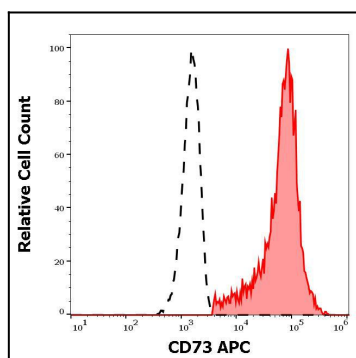


Figure 3 : Separation of human CD73 positive CD19 positive B cells (red-filled) from neutrophil granulocytes (black-dashed) in flow cytometry analysis (surface staining) of human peripheral whole blood stained using anti-human CD73 (AD2) APC antibody (10  $\mu$ l reagent / 100  $\mu$ l of peripheral whole blood).