

30-2591: Anti-Human CD300a APC (Clone : MEM-260)

Clonality :	Monoclonal
Clone Name :	MEM-260
Application :	FACS
Reactivity :	Human
Conjugate :	APC
Gene :	CD300A
Gene ID :	11314
Alternative Name :	IRC, CLM-8, IGSF12, CMRF35H, CD300a molecule
Isotype :	Mouse IgG1
Immunogen Information :	HPB human acute lymphoid leukemia cell line

Description

CD300a (CMRF-35H, IRp60) is a non-MHC-specific inhibitory receptor of immunoglobulin superfamily, which contains three immunoreceptor tyrosine-based inhibitory motifs (ITIMs) that associate with SH2-containing phosphatases SHP-1 and SHP-2. CD300a is expressed on many cell types including T cells, NK cells, neutrophils, eosinophils or mast cells. Its triggering inhibits activating signals such as those of IL5, GM-CSF or eotaxin, as well as suppresses mast cell degranulation or NK cell cytotoxic activity.

Specificity : The antibody MEM-260 reacts with an extracellular epitope of CD300a, a 60 kDa leukocyte transmembrane glycoprotein expressed on human granulocytes, monocytes, neutrophils, NK cells, mast cells and dendritic cells, 25% of circulating T cells and 15% of circulating B cells.

Product Info

Amount :	100 tests
Purification :	The purified antibody is conjugated with allophycocyanin (APC) under optimum conditions. The conjugate is purified by size-exclusion chromatography.
Content :	Formulation : Stabilizing phosphate buffered saline (PBS) solution containing 15 mM sodium azide
Storage condition :	Store in the dark at 2-8°C. Do not freeze. Avoid prolonged exposure to light.

Application Note

Flow cytometry: The reagent is designed for analysis of human blood cells using 10 μ l reagent / 100 μ l of whole blood or 10^6 cells in a suspension. The content of a vial (1 ml) is sufficient for 100 tests.

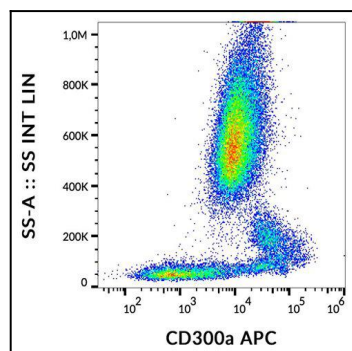


Figure 1 : Flow cytometry analysis (surface staining) of human peripheral blood cells with anti-CD300a (MEM-260) APC.