

30-2595: Anti-Human CD3 FITC (Clone : OKT3)

Clonality :	Monoclonal
Clone Name :	OKT3
Application :	FACS
Reactivity :	Human
Conjugate :	FITC
Gene :	CD3E
Gene ID :	916
Alternative Name :	CD3E, T3E, TCRE, CD3 antigen, epsilon polypeptide
Isotype :	Mouse IgG2a
Immunogen Information :	Commercially sensitive information

Description

CD3 complex is crucial in transducing antigen-recognition signals into the cytoplasm of T cells and in regulating the cell surface expression of the TCR complex. T cell activation through the antigen receptor (TCR) involves the cytoplasmic tails of the CD3 subunits CD3 gamma, CD3 delta, CD3 epsilon and CD3 zeta. These CD3 subunits are structurally related members of the immunoglobulins super family encoded by closely linked genes on human chromosome 11. The CD3 components have long cytoplasmic tails that associate with cytoplasmic signal transduction molecules. This association is mediated at least in part by a double tyrosine-based motif present in a single copy in the CD3 subunits. CD3 may play a role in TCR-induced growth arrest, cell survival and proliferation. The CD3 antigen is present on 68-82% of normal peripheral blood lymphocytes, 65-85% of thymocytes and Purkinje cells in the cerebellum. It is never expressed on B or NK cells. Decreased percentages of T lymphocytes may be observed in some autoimmune diseases.

Specificity : The mouse monoclonal antibody OKT3 recognizes an extracellular epitope on CD3 antigen of the TCR/CD3 complex on mature human T cells. This antibody, also known as Orthoclone OKT3 or Muromonab-CD3, has been extensively used as a drug for therapy of acute, glucocorticoid resistant rejection of allogenic renal, heart and liver transplants. It has also been investigated for use in treating T-cell acute lymphoblastic leukemia.

Product Info

Amount :	100 tests
Purification :	The purified antibody is conjugated with fluorescein isothiocyanate (FITC) under optimum conditions. The conjugate is purified by size-exclusion chromatography.
Content :	Formulation : Stabilizing phosphate buffered saline (PBS) solution containing 15 mM sodium azide
Storage condition :	Store in the dark at 2-8°C. Do not freeze. Avoid prolonged exposure to light.

Application Note

Flow cytometry: The reagent is designed for analysis of human blood cells using 4 µl reagent / 100 µl of whole blood or 10⁶ cells in a suspension. The content of a vial (0.4 ml) is sufficient for 100 tests.

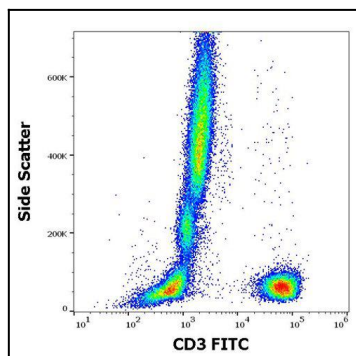


Figure 1 : Flow cytometry surface staining pattern of human peripheral whole blood stained using anti-human CD3 (OKT3) FITC antibody (4 μ l reagent / 100 μ l of peripheral whole blood).

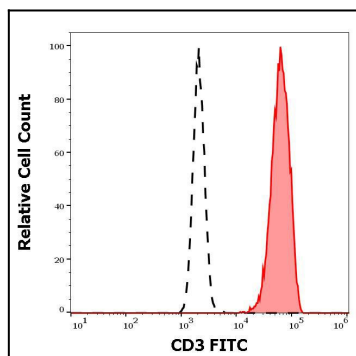


Figure 2 : Separation of human CD3 positive lymphocytes (red-filled) from neutrophil granulocytes (black-dashed) in flow cytometry analysis (surface staining) of human peripheral whole blood stained using anti-human CD3 (OKT3) FITC antibody (4 μ l reagent / 100 μ l of peripheral whole blood).