

### 30-2618: Anti-Human CD231 FITC (Clone : B2D)

<b>Clonality :</b>	Monoclonal
<b>Clone Name :</b>	B2D
<b>Application :</b>	FACS
<b>Reactivity :</b>	Human
<b>Conjugate :</b>	FITC
<b>Gene :</b>	TSPAN7
<b>Gene ID :</b>	7102
<b>Alternative Name :</b>	TSPAN7, TALLA-1, MXS1, MRX58, TM4SF2, tetraspanin 7
<b>Isotype :</b>	Mouse IgG1
<b>Immunogen Information :</b>	Human T-ALL cell line THP-6

#### Description

CD231 (TALLA-1, T-ALL-associated antigen 1), also known as tetraspanin 7, is a 150 kDa (under reducing conditions 32-45 kDa) transmembrane glycoprotein of tetraspanin family, expressed in T-type acute lymphoblastic leukemia, neuroblastoma, and neuronal tissue. Mutations of CD231 gene are associated with X-linked mental retardation, Huntington's chorea, and myotonic dystrophy. CD231 interacts with integrins and may have a role in the control of neurite outgrowth. Antibodies to CD231 are important for detection of T-ALL and are potential targets of its treatment.

**Specificity :** The mouse monoclonal antibody B2D recognizes an extracellular epitope of CD231 (TALLA-1, tetraspanin 7), a transmembrane glycoprotein expressed in neuronal tissue and T-ALL.

#### Product Info

<b>Amount :</b>	100 tests
<b>Purification :</b>	The purified antibody is conjugated with fluorescein isothiocyanate (FITC) under optimum conditions. The conjugate is purified by size-exclusion chromatography.
<b>Content :</b>	Formulation : Stabilizing phosphate buffered saline (PBS) solution containing 15 mM sodium azide
<b>Storage condition :</b>	Store in the dark at 2-8°C. Do not freeze. Avoid prolonged exposure to light.

#### Application Note

**Flow cytometry:** The reagent is designed for analysis of human blood cells using 4  $\mu$ l reagent / 100  $\mu$ l of whole blood or  $10^6$  cells in a suspension. The content of a vial (0.4 ml) is sufficient for 100 tests.

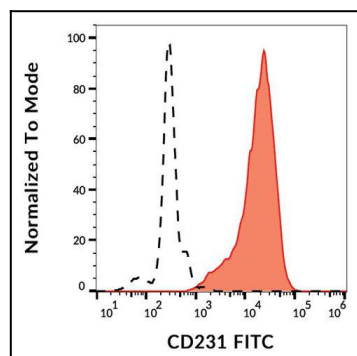


Figure 1 : Separation of JURKAT cells (red-filled) from human peripheral whole blood cells (black-dashed) in flow cytometry analysis (surface staining) using anti-human CD231 (B2D) FITC antibody (4  $\mu$ l reagent per milion cells in 100  $\mu$ l of cell suspension).