

### 30-2623: Anti-Human CD206 FITC (Clone : 15-2)

<b>Clonality :</b>	Monoclonal
<b>Clone Name :</b>	15-2
<b>Application :</b>	FACS
<b>Reactivity :</b>	Human
<b>Conjugate :</b>	FITC
<b>Gene :</b>	MRC1
<b>Gene ID :</b>	4360
<b>Alternative Name :</b>	MMR, MRC1, CLEC13DL, mannose receptor C-type 1
<b>Isotype :</b>	Mouse IgG1 kappa
<b>Immunogen Information :</b>	Purified human mannose receptor

### Description

CD206 (macrophage mannose receptor, MMR), also known as mannose receptor C1 (MRC1), is a type I transmembrane glycoprotein serving as pattern recognition receptor for carbohydrate groups on the surface of bacteria, fungi and other pathogens. Expressed mainly on tissue macrophages and dendritic cells, CD206 mediates endocytosis of these pathogens and presentation of their antigens to the adaptive immune system. CD206 can also be detected in a soluble form in human plasma and is elevated in patients with acute sepsis.

**Specificity :** The mouse monoclonal antibody 15-2 (also known as MR15-2) recognizes an extracellular epitope of CD206 (macrophage mannose receptor, MMR), a 162-175 kDa type I transmembrane protein expressed mainly on macrophages, dendritic cells and hepatic or lymphatic endothelial cells, but not on monocytes.

### Product Info

<b>Amount :</b>	100 tests
<b>Purification :</b>	The purified antibody is conjugated with fluorescein isothiocyanate (FITC) under optimum conditions. The conjugate is purified by size-exclusion chromatography.
<b>Content :</b>	Formulation : Stabilizing phosphate buffered saline (PBS) solution containing 15 mM sodium azide
<b>Storage condition :</b>	Store in the dark at 2-8°C. Do not freeze. Avoid prolonged exposure to light.

### Application Note

**Flow cytometry:** The reagent is designed for analysis of human blood cells using 4  $\mu$ l reagent / 100  $\mu$ l of whole blood or  $10^6$  cells in a suspension. The content of a vial (0.4 ml) is sufficient for 100 tests.

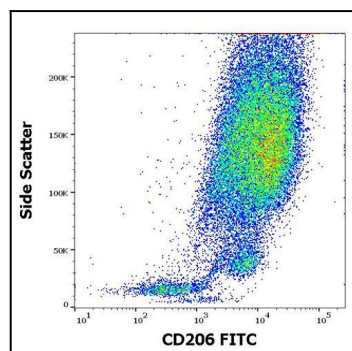


Figure 1 : Flow cytometry surface staining pattern of human stimulated (GM-CSF + IL-4) peripheral blood mononuclear cells stained using anti-human CD206 (15-2) FITC antibody (4  $\mu$ l reagent per million cells in 100  $\mu$ l of cell suspension).

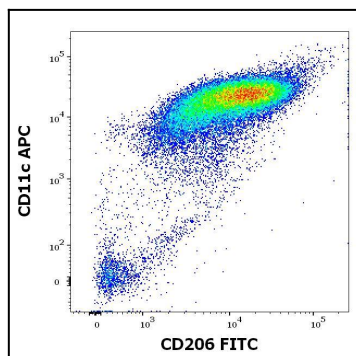


Figure 2 : Flow cytometry multicolor surface staining of human stimulated (GM-CSF + IL-4) peripheral blood mononuclear cells stained using anti-human CD206 (15-2) FITC antibody (4  $\mu$ l reagent per milion cells in 100  $\mu$ l of cell suspension) and anti-human CD11c (BU15) APC antibody (10  $\mu$ l reagent per milion cells in 100  $\mu$ l of cell suspension).

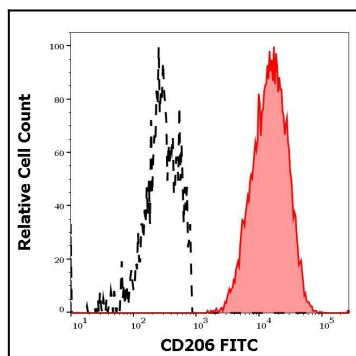


Figure 3 :Separation of human CD206 positive CD11c positive dendritic cells differentiated upon monocyte stimulation (GM-CSF + IL-4) (red-filled) from non-stimulated lymphocytes (black-dashed) in flow cytometry analysis (surface staining) of human stimulated (GM-CSF + IL-4) peripheral blood mononuclear cells stained using anti-human CD206 (15-2) FITC antibody (4  $\mu$ l reagent / 100  $\mu$ l of peripheral whole blood).