

30-2630: Anti-Human CD172b Antibody (Clone : B4B6)

Clonality :	Monoclonal
Clone Name :	B4B6
Application :	FACS
Reactivity :	Human
Gene :	SIRPB1
Gene ID :	10326
Format :	Purified
Alternative Name :	SIRPB1,signal regulatory protein beta 1
Isotype :	Mouse IgG1
Immunogen Information :	NIH-3T3 cells transfected with human CD172b

Description

CD172b, the signal-regulatory protein beta (SIRP beta) is a disulfide-linked homodimer expressed on myeloid cells including monocytes and dendritic cells. Similarly to CD172a, it serves as a negative regulator of tyrosine kinase-coupled signaling processes. Unlike CD172a, the CD172b protein does not possess the cytoplasmic domain, but instead its transmembrane domain can interact with another transmembrane protein DAP-12, which contains ITAM sequences in its intracellular domain and links CD172b to the downstream signaling molecules. The result is e.g. regulation of neutrophil transepithelial migration.

Specificity : The mouse monoclonal antibody B4B6 recognizes an extracellular epitope of CD172b, an approximately 50 kDa transmembrane glycoprotein expressed on myeloid cells.

Product Info

Amount :	0.1 mg
Purification :	Purified by protein-A affinity chromatography
Content :	1 mg/ml Formulation : Phosphate buffered saline (PBS) solution with 15 mM sodium azide
Storage condition :	Store at 2-8°C. Do not freeze.

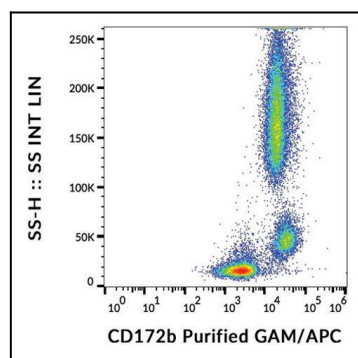


Figure 1 : Flow cytometry analysis (surface staining) of human peripheral blood cells with anti-human CD172b (B4B6) purified, GAM-APC.