

### 30-2636: Anti-Human CD170 Antibody (Clone : 1A5)

<b>Clonality :</b>	Monoclonal
<b>Clone Name :</b>	1A5
<b>Application :</b>	FACS , IP, IHC(F), ICC, ELISA
<b>Reactivity :</b>	Human
<b>Gene :</b>	SIGLEC5
<b>Gene ID :</b>	8778
<b>Format :</b>	Purified
<b>Alternative Name :</b>	OBBP2, OB-BP2, SIGLEC-5, SIGLEC5,sialic acid binding Ig like lectin 5
<b>Isotype :</b>	Mouse IgG1
<b>Immunogen Information :</b>	Fusion protein composed of human CD170 extracellular domain and Fc region of human IgG1

#### Description

CD170, also known as Siglec 5 (sialic acid binding Ig-like lectin 5) is a type 1 transmembrane glycoprotein containing two cytoplasmic immunoreceptor tyrosine inhibitory motifs (ITIMs). CD170 forms homodimers and functions as an inhibitory receptor able to downregulate cell activation. It binds to alpha2,3- and alpha2,6-linked sialic acid ligands, e.g. on glycophorin A (CD235a). Aberrant expression of CD170 by CD34+ progenitor cells can be observed in case of acute myeloid leukemias.

**Specificity :** The mouse monoclonal antibody 1A5 recognizes an extracellular epitope of CD170 (Siglec-5, sialic acid binding Ig-like lectin 5), a transmembrane glycoprotein expressed strongly by neutrophils, macrophages activated during infections, monocytes, and dendritic cells. As in case with other anti-CD170 antibodies, this antibody crossreacts with Siglec-14, whose first two Ig domains are almost identical to those of CD170.

#### Product Info

<b>Amount :</b>	0.1 mg
<b>Purification :</b>	Purified from cell culture supernatant by protein-A affinity chromatography
<b>Content :</b>	1 mg/ml Formulation : Phosphate buffered saline (PBS) solution with 15 mM sodium azide
<b>Storage condition :</b>	Store at 2-8°C. Do not freeze.

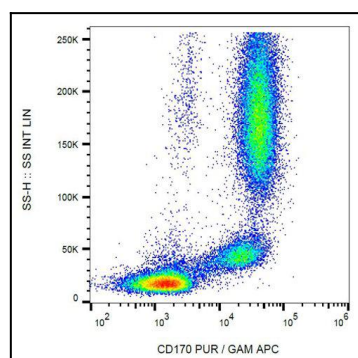


Figure 1 : Flow cytometry (surface staining) of human peripheral blood cells using anti-CD170 (1A5) purified, GAM-APC.