

30-2648PE: PE Conjugated Anti-Human CD151 (Clone : 50-6)

Clonality :	Monoclonal
Clone Name :	50-6
Application :	FACS
Reactivity :	Human
Conjugate :	PE
Gene :	CD151
Gene ID :	977
Alternative Name :	RAPH blood group, MER2, SFA1, PETA-3, GP27,CD151 molecule (Raph blood group)
Isotype :	Mouse IgG1 kappa
Immunogen Information :	Human epidermoid carcinoma cell line Hep-3

Description

CD151, also known as PETA-3 (platelet-endothelial tetraspan antigen), is a four-pass transmembrane glycoprotein with short cytoplasmic N- and C-termini. CD151 is expressed mainly in platelets and megakaryocytes, immature hematopoietic cells, activated T cells, in endothelium, muscle cells, and epithelial cells. It associates with CD9, CD181, and integrin complexes alpha 3 / beta 1 (CD49c / CD29), alpha 5 / beta 1 (CD49e / CD29), and alpha 6 / beta 4 (CD49f / CD104). CD151 appears to be involved in cell adhesion and migration, including metastasis.

Specificity : The mouse monoclonal antibody CD151 recognizes an extracellular epitope of CD151 (also known as PETA-3), a 29 kDa transmembrane protein of tetraspanin family, expressed in many cell types.

Product Info

Amount :	100 tests
Purification :	The purified antibody is conjugated with R-phycoerythrin (PE) under optimum conditions. The conjugate is purified by size-exclusion chromatography.
Content :	Formulation : Stabilizing phosphate buffered saline (PBS) solution containing 15 mM sodium azide
Storage condition :	Store in the dark at 2-8°C. Do not freeze. Avoid prolonged exposure to light.

Application Note

Flow cytometry: The reagent is designed for analysis of human blood cells using 10 Âµl reagent / 100 Âµl of whole blood or 10⁶ cells in a suspension. The content of a vial (1 ml) is sufficient for 100 tests.

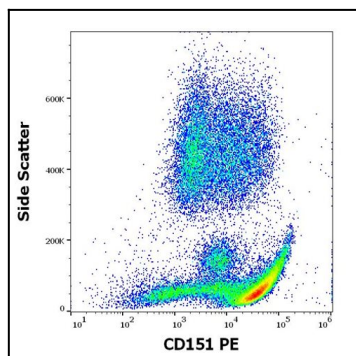


Figure 1: Flow cytometry surface staining pattern of human peripheral whole blood stained using anti-human CD151 (50-6) PE antibody

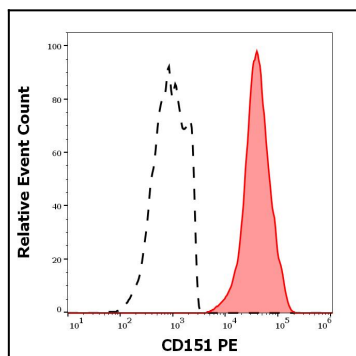


Figure 2: Separation of human CD45 negative CD151 positive thrombocytes (red-filled) from CD151 negative lymphocytes (black-dashed) in flow cytometry analysis (surface staining) of human peripheral whole blood stained using anti-human CD151 (50-6) PE antibody