

## 12-9069: Anti-PDL1 Antibody (atezolizumab biosimilar) (RG7446)

<b>Clonality :</b>	Monoclonal
<b>Application :</b>	ELISA,FACS
<b>Reactivity :</b>	Human
<b>Gene ID :</b>	29126
<b>Uniprot ID :</b>	Q9NZQ7
<b>Format :</b>	Purified
<b>Alternative Name :</b>	MPDL3280A,RG7446, PD-L1, CD274, B7-H1, PDCD1L1, PDCD1LG1
<b>Isotype :</b>	Human IgG1

### Product Info

<b>Amount :</b>	50 µg / 100 µg
<b>Purification :</b>	Purified from cell culture supernatant by affinity chromatography.
<b>Content :</b>	Preservative: 0.1% Procline 300. Constituents: 50% Glycerol; PBS, pH 7.4; 0.1% BSA Not Sterile
<b>Storage condition :</b>	Store at -20°C (Avoid repeated freezing and thawing).

### Application Note

Reconstitute with deionized water. ELISA 1:5000-10000, Flow Cyt 1:100

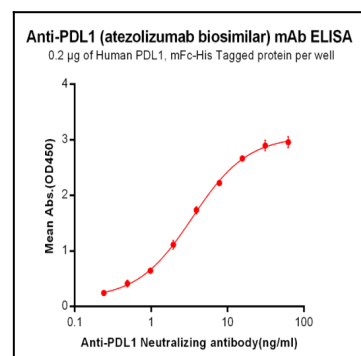


Figure-1: ELISA plate pre-coated by 2 µg/ml (100 µl/well) Human PDL1, mFc-His tagged protein can bind Anti-PDL1 Neutralizing antibody in a linear range of 0.24-7.81 ng/ml.

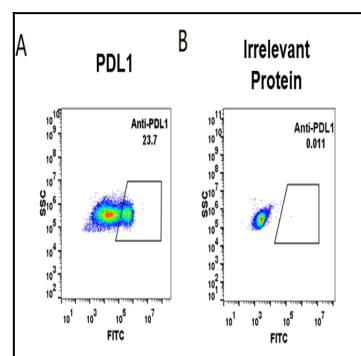


Figure-2: HEK293 cell line transfected with irrelevant protein (B) and human PDL1(A) were surface stained with anti-PDL1 neutralizing antibody 1 µg/ml (atezolizumab) followed by Alexa 488-conjugated anti-rabbit IgG secondary antibody.