

## 12-9082: Anti-CTLA4 Antibody (ipilimumab biosimilar) (MDX-CTLA-4)

<b>Clonality :</b>	Monoclonal
<b>Application :</b>	ELISA
<b>Reactivity :</b>	Human
<b>Gene ID :</b>	1493
<b>Uniprot ID :</b>	P16410
<b>Format :</b>	Purified
<b>Alternative Name :</b>	BMS-734016, MDX-010, MDX-CTLA-4, CTLA4, CD152
<b>Isotype :</b>	Human IgG1

### Product Info

<b>Amount :</b>	50 µg / 100 µg
<b>Purification :</b>	Purified from cell culture supernatant by affinity chromatography.
<b>Content :</b>	Preservative: 0.1% Procline 300. Constituents: 50% Glycerol; PBS, pH 7.4; 0.1% BSA Not Sterile
<b>Storage condition :</b>	Store at -20°C (Avoid repeated freezing and thawing).

### Application Note

Reconstitute with deionized water. ELISA 1:5000-10000

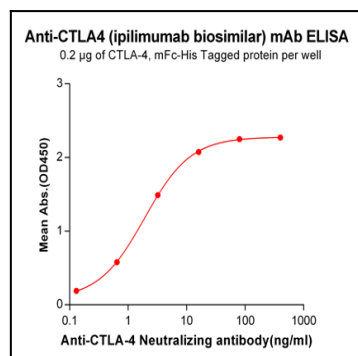


Figure-1:ELISA plate pre-coated by 2µg/ml (100 µl/well) Human CTLA4, mFc-His tagged protein can bind Anti-CTLA4 Neutralizing antibody in a linear range of 0.13-16.0 ng/ml.

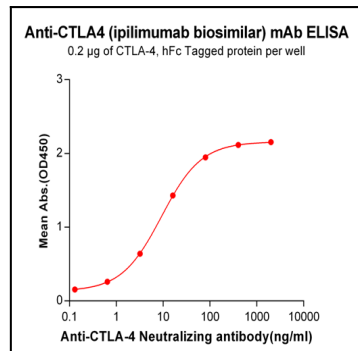


Figure-2: ELISA plate pre-coated by 2 µg/ml (100 µl/well) Human CTLA4, hFc tagged protein can bind Anti-CTLA4 Neutralizing antibody in a linear range of 0.64-80.0 ng/ml.

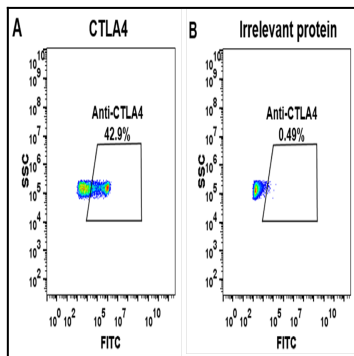


Figure-3: HEK293 cell line transfected with irrelevant protein (B) and human CTLA4 (A) were surface stained with anti-CTLA4 neutralizing antibody 1 $\mu$ g/ml (ipilimumab) followed by Alexa 488-conjugated anti-human IgG secondary antibody.