

#### 44-1193: Anti-CD20 Monoclonal Antibody (Clone:IHC532)

<b>Clonality :</b>	Monoclonal
<b>Clone Name :</b>	IHC532
<b>Application :</b>	IHC
<b>Reactivity :</b>	Human
<b>Gene :</b>	MS4A1
<b>Gene ID :</b>	931
<b>Uniprot ID :</b>	P11836
<b>Format :</b>	Purified
<b>Alternative Name :</b>	B-lymphocyte antigen CD20, B-lymphocyte surface antigen B1, Bp35, Leukocyte surface antigen Leu-16, Membrane-spanning 4-domains subfamily A member 1
<b>Isotype :</b>	Mouse IgG2a, Kappa

#### Description

Cluster of Differentiation (CD20), also known as B-Lymphocyte Antigen, is a non-glycosylated protein expressed on the surface of normal and malignant B-cells, which functions in chemokine signaling and microenvironmental interactions of B-cells. Anti-CD20 stains a minority of Reed-Sternberg cells with Hodgkin's disease. Since CD20 does not stain T-cell malignancies, it is a very useful marker for B-cell lymphomas. CD20 is also not reactive on non-hematopoietic neoplasms.

#### Product Info

<b>Amount :</b>	0.1 ml / 1 ml
<b>Purification :</b>	Protein A/G Chromatography
<b>Storage condition :</b>	Store at 2°C - 8°C.

#### Application Note

Recommended dilutions: Immunohistochemical analysis: 1:100 - 1:200. However, this need to be optimized based on the research applications.

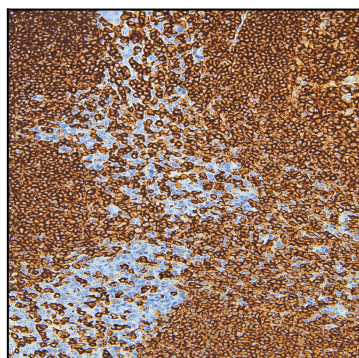


Figure 1: Immunohistochemical analysis of CD20 (IHC532) on Tonsil.