

## 21-7001: Recombinant MPXV L1R Protein, N-Term His (Ecoli)

**Application :** Functional Assay, ELISA

**Uniprot ID :** NP\_536512.1

### Description

Monkeypox (MPX), a double-stranded DNA virus, is a zoonotic orthopoxvirus belonging to the family Poxviridae that causes disease in humans similar to smallpox with notably lower mortality. MPX is endemic to western and central Africa, with outbreaks in the Western Hemisphere associated with the exotic pet trade and international travel. The monkeypox virus or MPXV is extremely pathogenic and can spread both from animals to humans and from human to human. The virus can spread from human to human by both direct contacts with the infectious rash, scabs, or body fluids, or indirectly by touching items (such as clothing or linens) used by the patient or by respiratory secretions during prolonged, face-to-face contact, or during intimate physical contact, such as kissing, cuddling, or sex. The incubation period of the disease ranges from 5 to 21 days and the symptoms may vary from 2 to 5 weeks. Due to poorly available resources in the endemic areas, the diagnosis, clinical recognition, and prevention of monkeypox still remain a big challenge. Size of the protein 18kDa.

### Product Info

**Amount :** 10 µg / 50 µg

**Purification :** Greater than 95% by SDS-PAGE.

**Content :** Lyophilized in PBS. Reconstitute with sterile water to desired concentration.

**Storage condition :** Store the lyophilized protein at -20°C to -80°C for 12 months. After reconstitution, the protein solution is stable at -20°C for 3 months, at 2-8°C for up to 1 week.

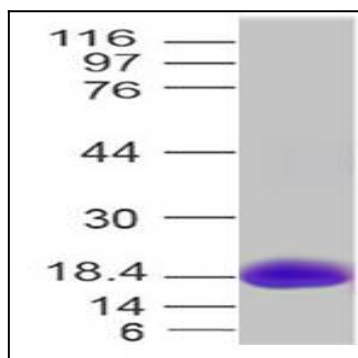


Figure1: Coomassie Blue Stain gel Recombinant L1R protein (4 ug) was loaded in 4-20% SDS Page gel in reducing condition.