

30-2699: Anti-Hu CD344 PE

Clonality :	Monoclonal
Clone Name :	CH3A4A7
Conjugate :	PE
Gene :	FZD4
Gene ID :	8322
Uniprot ID :	Q9ULV1
Alternative Name :	Frizzled-4, FZD4, EVR1, FEVR, GPCR
Isotype :	Mouse IgG1 kappa
Immunogen Information :	WERI-RB-1 retinoblastoma cells

Description

CD344 (Frizzled class receptor 4) is a G-protein coupled 7-TM protein, predominantly expressed in fetal neuronal progenitor cells, neuronal intestinal cells, as well as in the kidney, lung, brain, and liver. CD344 is important for regulation of cell polarity, proliferation, and tissue development. Defects in CD344 expression, or its mutation, lead e.g. to serious failures in retinal vascularization, defects in cerebellum, progressive hearing loss, or impaired corpora lutea formation and function.

The mouse monoclonal antibody CH3A4A7 recognizes an extracellular epitope of CD344 (Frizzled 4), a 7-TM protein of G-protein-coupled receptor family, which is a marker for neuronal stem cells.

Product Info

Amount :	100 Tests
Purification :	Purified antibody is conjugated with R-phycoerythrin (PE) under optimum conditions. Unconjugated antibody and free fluorochrome are removed by size-exclusion chromatography.
Content :	Stabilizing phosphate buffered saline (PBS), pH 7.4, 15 mM sodium azide
Storage condition :	Store at 2-8°C. Protect from prolonged exposure to light. Do not freeze. Stabilizing phosphate buffered saline (PBS), pH 7.4, 15 mM sodium azide

Application Note

Flow cytometry: The reagent is designed for analysis of human blood cells using 10 µl reagent / 100 µl of whole blood or 10⁶ cells in a suspension. The content of a vial (1 ml) is sufficient for 100 tests.

Flow cytometry: The reagent is designed for analysis of human blood cells using 10 µl reagent / 100 µl of whole blood or 10⁶ cells in a suspension. The content of a vial (1 ml) is sufficient for 100 tests.

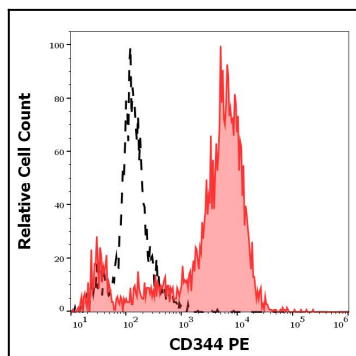


Figure 1 :Separation of HeLa cells stained using anti-human CD344 (CH3A4A7) PE antibody (10 μ l reagent per million cells in 100 μ l of cell suspension, red-filled) from HeLa cells stained using mouse IgG1 isotype control (MOPC-21) PE antibody (concentration in sample 5 μ g/ml, same as CD344 PE concentration, black-dashed) in flow cytometry analysis (surface staining) of HeLa cell suspension.