

## 12-9129: Anti-GUCY2C (indusatumab biosimilar) mAb

<b>Clonality :</b>	Monoclonal
<b>Reactivity :</b>	Human
<b>Alternative Name :</b>	DIAR6, GC-C, GUC2C, MECIL, MUCIL, STAR
<b>Isotype :</b>	IgG1

### Description

Research grade biosimilar. Not for use in therapeutic or diagnostic procedures for humans or animals.  
Specificity: Human

### Product Info

<b>Amount :</b>	50 µg / 100 µg
<b>Purification :</b>	Purified from cell culture supernatant by affinity chromatography Buffer :Lyophilized from sterile PBS, pH 7.4. Normally 5 % - 8% trehalose is added as protectants before lyophilization.
<b>Content :</b>	Reconstituent :Reconstitute with deionized water Preservative :0.1% Procline 300 Not Sterile
<b>Storage condition :</b>	Store at -20°C (Avoid repeated freezing and thawing)

### Application Note

Flow Cyt 1:100

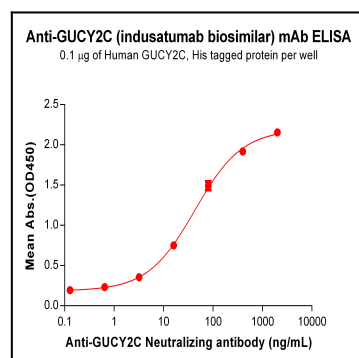


Figure 1. Flow cytometry analysis with Anti-GUCY2C(indusatumab biosimilar) mAb 1 µg/mL on Expi293 cells transfected with Human GUCY2C (Blue histogram) or Expi293 transfected with irrelevant protein (Red histogram).

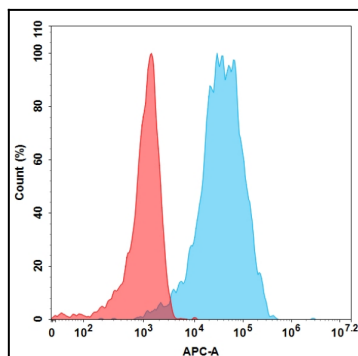


Figure 2. Flow cytometry analysis with Anti-GUCY2C(indusatumab biosimilar) mAb 1  $\mu\text{g/mL}$  on Expi293 cells transfected with Human GUCY2C (Blue histogram) or Expi293 transfected with irrelevant protein (Red histogram).