

12-9134: Anti-CLDN18.2 (zolbetuximab biosimilar)

Clonality : Monoclonal
Reactivity : Human
Uniprot ID : P56856
Alternative Name : SFTA5; SFTPJ
Isotype : IgG1

Description

Research grade biosimilar. Not for use in therapeutic or diagnostic procedures for humans or animals.
Specificity: Human

Product Info

Amount : 50 µg / 100 µg
Purification : Purified from cell culture supernatant by affinity chromatography
Buffer :Lyophilized from sterile PBS, pH 7.4. Normally 5 % - 8% trehalose is added as protectants before lyophilization.
Content : Reconstituent :Reconstitute with deionized water
Preservative :0.1% Procline 300
Not Sterile
Storage condition : Store at -20°C (Avoid repeated freezing and thawing)

Application Note

Flow Cytometry: 1-2 ug per 1×10^6 cells.

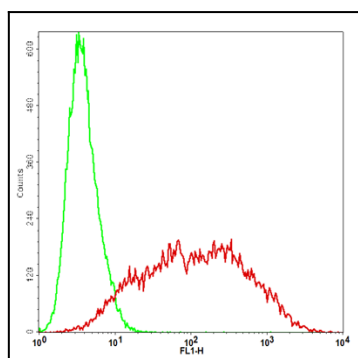


Figure 1. Flow cytometry analysis of Anti-CLDN18.2 mAb (zolbetuximab) tested on CHO-K1 cells transfected with human CLDN18.2 (Red) or parental CHO-K1 cells (Green) at 2 ug per 1×10^6 cells. The secondary antibody used was FITC-conjugated goat anti-human IgG, Fc-gamma (Jackson, #109-095-098).