

### 30-2702: Anti-Hu CD58 Purified

<b>Clone Name :</b>	MEM-63
<b>Application :</b>	FACS
<b>Reactivity :</b>	Pig,Human
<b>Gene ID :</b>	965
<b>Uniprot ID :</b>	P19256
<b>Format :</b>	Purified
<b>Alternative Name :</b>	LFA3, AG3
<b>Isotype :</b>	Mouse IgG1
<b>Immunogen Information :</b>	NALM-6 human pre-B cell line

### Description

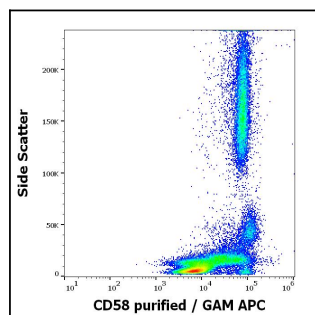
**Formulation:** Phosphate buffered saline (PBS), pH 8.8, 15 mM sodium azide **Specificity :** The antibody MEM-63 reacts with CD58 (LFA-3), a 40-70 kDa extracellular membrane glycoprotein distributed over many tissues, leukocytes, erythrocytes, endothelial cells, epithelial cells and fibroblasts. CD58 (LFA-3) is an immunoglobulin family adhesion molecule expressed by both hematopoietic and non-hematopoietic cells (often on antigen presenting cells) and serving as ligand of CD2. This interaction is important for T cell-mediated immunity. CD58 is expressed in transmembrane form and in GPI-anchored form; the later is constitutively associated with protein kinases whereas the transmembrane form activates kinase activity upon triggering. CD58 is a powerful tool for detection of minimal residual disease in acute lymphocytic leukemia, and for evaluation of liver damage related with hepatitis B.

### Product Info

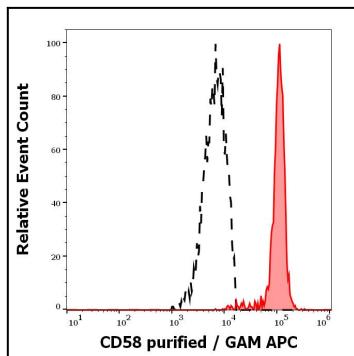
<b>Amount :</b>	0.1 mg
<b>Purification :</b>	Purified by protein-A affinity chromatography.
<b>Content :</b>	1 mg/ml Formulation: Phosphate buffered saline (PBS), pH 8.8, 15 mM sodium azide
<b>Storage condition :</b>	Store at 2-8°C. Do not freeze.

### Application Note

**Flow cytometry:** Recommended dilution: 1-4 µg/ml. Cold-induced transient opalescent turbidity may appear during the storage at 2 - 8°C. Bring the antibody to room temperature until the turbidity disappears, and mix well before the use.



Flow cytometry surface staining pattern of human peripheral whole blood stained using anti-human CD58 (MEM-63) purified antibody (concentration in sample 1,67 µg/ml, GAM APC).



Separation of human monocytes (red-filled) from human CD58 negative lymphocytes (black-dashed) in flow cytometry analysis (surface staining) of human peripheral whole blood stained using anti-human CD58 (MEM-63) purified antibody (concentration in sample 1,67  $\mu$ g/ml, GAM APC).