

12-9148: Anti-PSMA(rosopatamab biosimilar) mAb

Clonality :	Monoclonal
Application :	ELISA
Reactivity :	Human
Alternative Name :	FGCP, FOLH, GCP2, GCPII, mGCP, NAALAD1, NAALAdase, PSM
Isotype :	IgG1

Description

Research grade biosimilar. Not for use in therapeutic or diagnostic procedures for humans or animals.

Product Info

Amount :	50 µg / 100 µg
Purification :	Purified from cell culture supernatant by affinity chromatography
Content :	Not Sterile
Storage condition :	Store at -20°C to -80°C for 12 months in lyophilized form. After reconstitution, if not intended for use within a month, aliquot and store at -80°C (Avoid repeated freezing and thawing).Lyophilized proteins are shipped at ambient temperature.

Application Note

ELISA 1:5000-10000, FACS 1:100

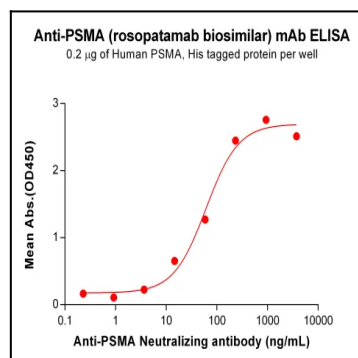


Figure 1. ELISA plate pre-coated by 2 µg/mL (100 µL/well) Human PSMA Protein, His Tag can bind Anti-PSMA Neutralizing antibody in a linear range of 3.66-234.38 ng/mL.

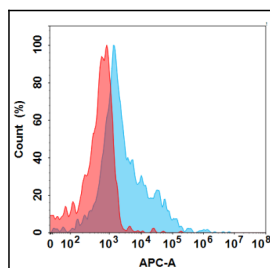


Figure 2. Flow cytometry analysis with 15 µg/mL Anti-PSMA (rosopatamab biosimilar) mAb on Expi293 cells transfected with Human PSMA protein (Blue histogram) or Expi293 transfected with irrelevant protein (Red histogram).

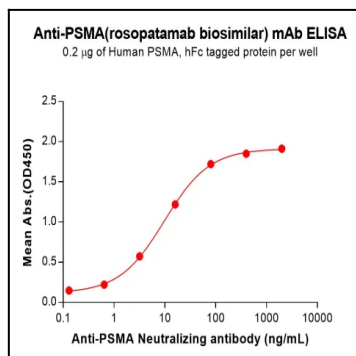


Figure 3. ELISA plate pre-coated by 2 µg/mL (100 µL/well) Human PSMA Protein, hFc Tag can bind Anti-PSMA(rosopatamab biosimilar) mAb in a linear range of 3.20-80 ng/mL. In order to specifically detect the Anti-PSMA(rosopatamab biosimilar) mAb, mouse anti-human Fab-specific antibody was used as detection antibody.