

## 12-9154: Anti-KIR2DL2(lirilumab biosimilar) mAb

<b>Clonality :</b>	Monoclonal
<b>Application :</b>	FACS
<b>Reactivity :</b>	Human
<b>Alternative Name :</b>	CD158b, CD158B1, NKAT-6, NKAT6, p58.2
<b>Isotype :</b>	IgG4

### Description

Research grade biosimilar. Not for use in therapeutic or diagnostic procedures for humans or animals.

### Product Info

<b>Amount :</b>	50 µg / 100 µg
<b>Purification :</b>	Purified from cell culture supernatant by affinity chromatography
<b>Content :</b>	Not Sterile
<b>Storage condition :</b>	Store at -20°C to -80°C for 12 months in lyophilized form. After reconstitution, if not intended for use within a month, aliquot and store at -80°C (Avoid repeated freezing and thawing).Lyophilized proteins are shipped at ambient temperature.

### Application Note

FACS 1:100

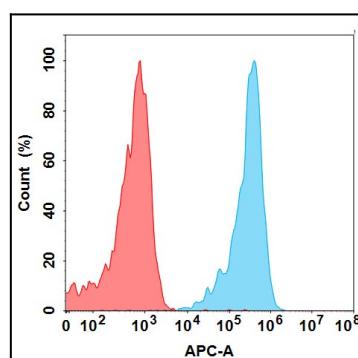


Figure 1. Flow cytometry analysis with 1 µg/mL Anti-KIR2DL2 (lirilumab biosimilar) mAb on Expi293 cells transfected with Human KIR2DL2 protein (Blue histogram) or Expi293 transfected with irrelevant protein (Red histogram).