

12-9161: Anti-LILRB2 (MK-4830) mAb

| | |
|---------------------------|-----------------------------|
| Clonality : | Monoclonal |
| Application : | ELISA |
| Reactivity : | Human |
| Alternative Name : | LIR-2, ILT-4, MIR-10, CD85d |
| Isotype : | IgG4 |

Description

Research grade biosimilar. Not for use in therapeutic or diagnostic procedures for humans or animals.

Product Info

| | |
|----------------------------|---|
| Amount : | 50 µg / 100 µg |
| Purification : | Purified from cell culture supernatant by affinity chromatography |
| Content : | Not Sterile |
| Storage condition : | Store at -20°C to -80°C for 12 months in lyophilized form. After reconstitution, if not intended for use within a month, aliquot and store at -80°C (Avoid repeated freezing and thawing). Lyophilized proteins are shipped at ambient temperature. |

Application Note

ELISA 1:5000-10000, FACS 1:100

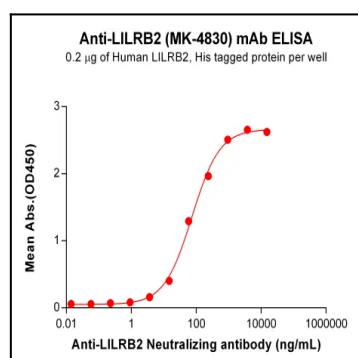


Figure 1. ELISA plate pre-coated by 2 µg/mL (100 µL/well) Human LILRB2 Protein, His Tag can bind Anti-LILRB2 Neutralizing antibody in a linear range of 3.66-937.50 ng/mL.

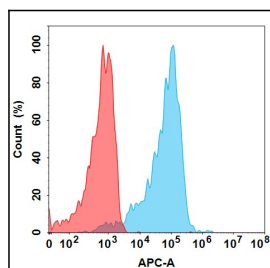


Figure 2. Flow cytometry analysis with 1 µg/mL Anti-LILRB2 (MK-4830) mAb on Expi293 cells transfected with Human LILRB2 protein (Blue histogram) or Expi293 transfected with irrelevant protein (Red histogram).