

12-9168: Anti-PDL1 (durvalumab biosimilar) mAb

Clonality :	Monoclonal
Application :	FACS
Reactivity :	Human
Alternative Name :	PD-L1, CD274, B7-H1, PDCD1L1, PDCD1LG1
Isotype :	IgG1

Description

Research grade biosimilar. Not for use in therapeutic or diagnostic procedures for humans or animals.

Product Info

Amount :	50ug / 100 µg
Purification :	Purified from cell culture supernatant by affinity chromatography
Content :	Not Sterile
Storage condition :	Store at -20°C to -80°C for 12 months in lyophilized form. After reconstitution, if not intended for use within a month, aliquot and store at -80°C (Avoid repeated freezing and thawing). Lyophilized proteins are shipped at ambient temperature.

Application Note

FACS 1:100

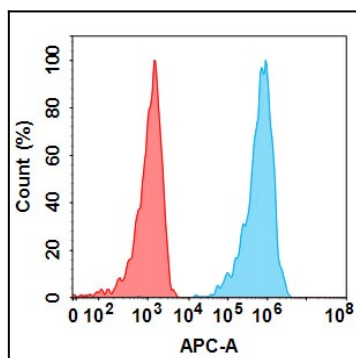


Figure 1. Flow cytometry analysis with 1 μ g/mL Anti-PDL1(durvalumab biosimilar) mAb on Expi293 cells transfected with Human PDL1 protein (Blue histogram) or Expi293 transfected with irrelevant protein (Red histogram).

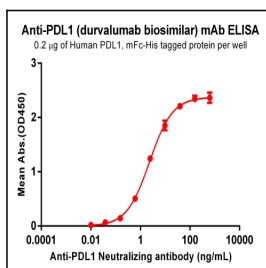


Figure 2. ELISA plate pre-coated by 2 μ g/ml (100 μ l/well) Human PDL1, mFc-His tagged protein can bind Anti-PDL1 (durvalumab biosimilar) Neutralizing antibody in a linear range of 0.61-9.77 ng/ml.