

12-9170: Anti-CLEC4C (litifilimab biosimilar) mAb

Clonality :	Monoclonal
Application :	ELISA
Reactivity :	Human
Alternative Name :	BDCA-2, CD303
Isotype :	IgG1

Description

Research grade biosimilar. Not for use in therapeutic or diagnostic procedures for humans or animals.

Product Info

Amount :	50ug / 100 µg
Purification :	Purified from cell culture supernatant by affinity chromatography
Content :	Not Sterile
Storage condition :	Store at -20°C to -80°C for 12 months in lyophilized form. After reconstitution, if not intended for use within a month, aliquot and store at -80°C (Avoid repeated freezing and thawing).Lyophilized proteins are shipped at ambient temperature.

Application Note

ELISA 1:5000-10000, FACS 1:100

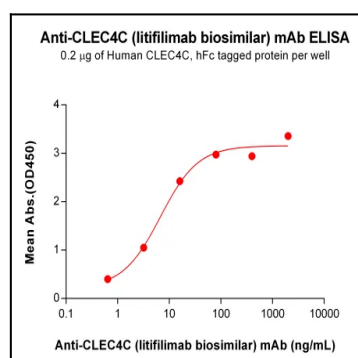


Figure 1. ELISA plate pre-coated by 2 µg/mL (100 µL/well) Human CLEC4C Protein, hFc Tag can bind Anti-CLEC4C (litifilimab biosimilar) mAb in a linear range of 0.64-80.00 ng/mL. In order to specifically detect the Anti-CLEC4C (litifilimab biosimilar) mAb, mouse anti-human Fab-specific antibody was used as detection antibody.

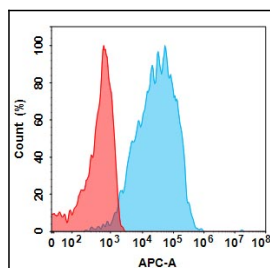


Figure 2. Flow cytometry analysis with 1 µg/mL Anti-CLEC4C (litifilimab biosimilar) mAb on Expi293 cells transfected with Human CLEC4C protein (Blue histogram) or Expi293 transfected with irrelevant protein (Red histogram).