

12-9173: Anti-CLDN6 (IMAB027) mAb

Clonality :	Monoclonal
Application :	ELISA
Reactivity :	Human
Uniprot ID :	P56747
Alternative Name :	Claudin 6, Claudin-6, Skullin
Isotype :	IgG1

Description

Research grade biosimilar. Not for use in therapeutic or diagnostic procedures for humans or animals.

Product Info

Amount :	50µg / 100 µg
Purification :	Purified from cell culture supernatant by affinity chromatography
Content :	Lyophilized from sterile PBS, pH 7.4. Normally 5 % " 8% trehalose is added as protectants before lyophilization. Recostitution: Before opening the tube, quick centrifuge the sample. Dissolve lyophilized protein samples in sterile, low endotoxin water recommended volume 154 ul. After adding sterile water cover the cap and mix by gently tapping the tube 5-10 times. DO NOT vortex. Not Sterile
Storage condition :	Store at -20°C to -80°C for 12 months in lyophilized form. After reconstitution, if not intended for use within a month, aliquot and store at -80°C (Avoid repeated freezing and thawing).Lyophilized proteins are shipped at ambient temperature.

Application Note

ELISA 1:5000-10000, FACS 1:100

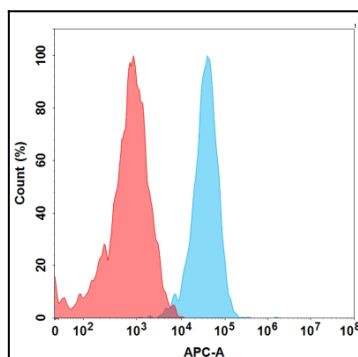


Figure 1. Flow cytometry analysis with 1 µg/mL Anti-CLDN6 (IMAB027) mAb on Expi293 cells transfected with Human CLDN6 protein (Blue histogram) or Expi293 transfected with irrelevant protein (Red histogram).

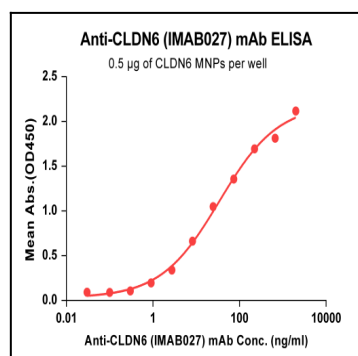


Figure 2. ELISA plates were pre-coated with 0.5 µg/per well purified human CLDN6 MNPs. Serial diluted Anti-CLDN6 monoclonal antibody solutions were added, washed, and incubated with secondary antibody before ELISA reading. From above data, the EC50 for 12-9173 binding with Claudin6 MNPs is 34.36 ng/ml.

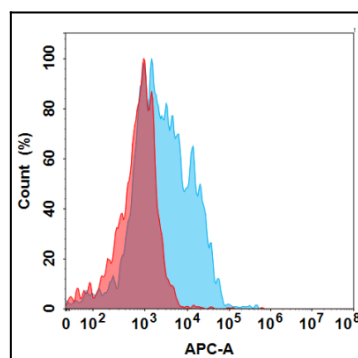


Figure 3. Flow cytometry analysis with 15 µg/mL Anti-CLDN6 (IMAB027) mAb on Expi293 cells transfected with Human CLDN9 protein (Blue histogram) or Expi293 transfected with irrelevant protein (Red histogram).