

## 12-9181: Anti-GDF15(ponsegromab biosimilar) mAb

<b>Clonality :</b>	Monoclonal
<b>Application :</b>	FACS
<b>Reactivity :</b>	Human
<b>Alternative Name :</b>	GDF-15, MIC-1, MIC1, NAG-1, PDF, PLAB, PTGFB
<b>Isotype :</b>	IgG1

### Description

Research grade biosimilar. Not for use in therapeutic or diagnostic procedures for humans or animals.

### Product Info

<b>Amount :</b>	50µg / 100 µg
<b>Purification :</b>	Purified from cell culture supernatant by affinity chromatography
<b>Content :</b>	Not Sterile
<b>Storage condition :</b>	Store at -20°C to -80°C for 12 months in lyophilized form. After reconstitution, if not intended for use within a month, aliquot and store at -80°C (Avoid repeated freezing and thawing).Lyophilized proteins are shipped at ambient temperature.

### Application Note

FACS 1:100

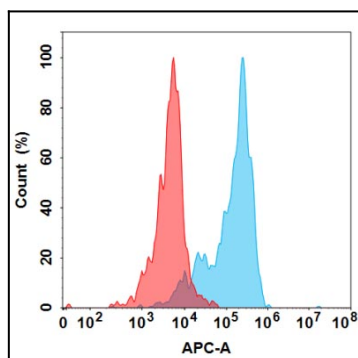


Figure 1. Flow cytometry analysis under cell membrane permeable condition with 1 µg/mL Anti-GDF15 (ponsegromab biosimilar) mAb on Expi293 cells transfected with Human GDF15 protein (Blue histogram) or Expi293 transfected with irrelevant protein (Red histogram).

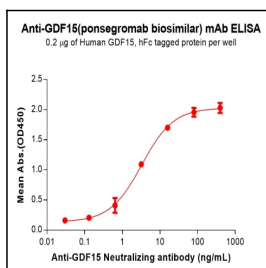


Figure 2. ELISA plate pre-coated by 2 µg/mL (100 µL/well) Human GDF15 Protein, hFc Tag can bind Anti-GDF15(ponsegromab biosimilar) mAb in a linear range of 0.64-80 ng/mL. In order to specifically detect Anti-GDF15(ponsegromab biosimilar) mAb, mouse anti-human Fab-specific antibody was used as detection antibody.