

12-9200: Anti-CCR8(BMS 986340) mAb

Clonality :	Monoclonal
Application :	ELISA
Reactivity :	Human
Alternative Name :	CC-CKR-8, CCR-8, CDw198, CKRL1, CMKBR8, CMKBRL2, CY6, GPRCY6, TER1
Isotype :	Human IgG1 kappa

Description

Research grade biosimilar. Not for use in therapeutic or diagnostic procedures for humans or animals.

Product Info

Amount :	50ug / 100 µg
Purification :	Purified from cell culture supernatant by affinity chromatography
Content :	Not Sterile
Storage condition :	Store at -20°C to -80°C for 12 months in lyophilized form. After reconstitution, if not intended for use within a month, aliquot and store at -80°C (Avoid repeated freezing and thawing).Lyophilized proteins are shipped at ambient temperature.

Application Note

ELISA 1:5000-10000, FACS 1:100

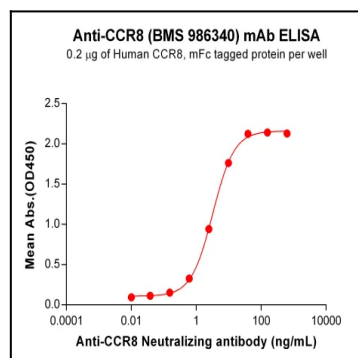


Figure 1. ELISA plate pre-coated by 2 ug/mL (100 uL/well) Human CCR8 Protein, mFc Tag can bind Anti-CCR8 Neutralizing antibody in a linear range of 0.15-39.06 ng/mL.

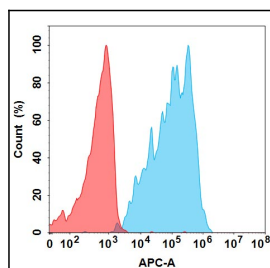


Figure 2. Flow cytometry analysis with 1 ug/mL Anti-CCR8 (BMS 986340) mAb on Expi293 cells transfected with Human CCR8 protein (Blue histogram) or Expi293 transfected with irrelevant protein (Red histogram).