

12-9202: Anti-CD24 antibody(DMC217), IgG1 Chimeric mAb

Clonality : Monoclonal
Clone Name : DMC217
Application : ELISA,FACS
Reactivity : Human
Alternative Name : CD24A

Description

This gene encodes a sialoglycoprotein that is expressed on mature granulocytes and B cells and modulates growth and differentiation signals to these cells. The precursor protein is cleaved to a short 32 amino acid mature peptide which is anchored via a glycosyl phosphatidylinositol (GPI) link to the cell surface. This gene was missing from previous genome assemblies, but is properly located on chromosome 6. Non-transcribed pseudogenes have been designated on chromosomes 1, 15, 20, and Y. Alternative splicing results in multiple transcript variants.

Product Info

Amount : 100 µg
Purification : Purified from cell culture supernatant by affinity chromatography
Content : Not Sterile
Storage condition : Store at -20°C for 12 months (Avoid repeated freezing and thawing)

Application Note

ELISA 1/5000-10000;FACS 1/100

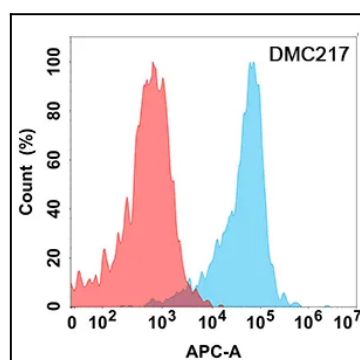


Figure 1. Flow cytometry analysis with Anti-CD24 (DMC217) on Expi293 cells transfected with human CD24 (Blue histogram) or Expi293 transfected with irrelevant protein (Red histogram).