

12-9207: Anti-TREM2 antibody(DMC223), IgG1 Chimeric mAb

Clonality :	Monoclonal
Clone Name :	DMC223
Application :	ELISA,FACS
Reactivity :	Human
Alternative Name :	PLOSL2; TREM-2; Trem2a; Trem2b; Trem2c

Description

This gene encodes a membrane protein that forms a receptor signaling complex with the TYRO protein tyrosine kinase binding protein. The encoded protein functions in immune response and may be involved in chronic inflammation by triggering the production of constitutive inflammatory cytokines. Defects in this gene are a cause of polycystic lipomembranous osteodysplasia with sclerosing leukoencephalopathy (PLOSL). Alternative splicing results in multiple transcript variants encoding different isoforms.

Product Info

Amount :	100 µg
Purification :	Purified from cell culture supernatant by affinity chromatography
Content :	Not Sterile
Storage condition :	Store at -20°C for 12 months (Avoid repeated freezing and thawing)

Application Note

ELISA 1/5000-10000;FACS 1/100

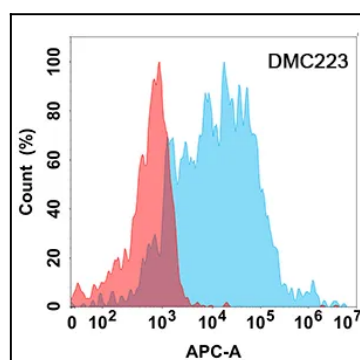


Figure 1. Flow cytometry analysis with Anti-TREM2 (DMC223) on Expi293 cells transfected with human TREM2 (Blue histogram) or Expi293 transfected with irrelevant protein (Red histogram).

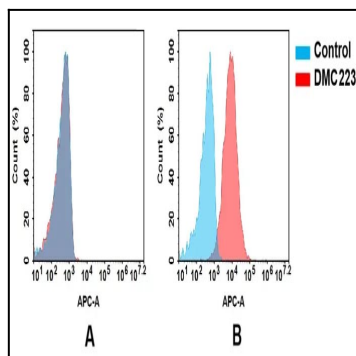


Figure 2. Flow cytometry analysis of antigen binding of anti-human TREM2 mAb. (A) The antibody does not bind to CHO-S cells that do not express TREM2. (B) A clear peak shift of the antibody was seen compared to the control when incubated with TREM2-expressing THP-1 cells, indicating strong binding of the antibody to TREM2. Antibodies were incubated at 5 μ g/mL.