

12-9209: Anti-IL21R antibody(DMC225), IgG1 Chimeric mAb

Clonality : Monoclonal
Clone Name : DMC225
Application : ELISA,FACS
Reactivity : Human
Alternative Name : CD360, IMD56, NILR

Description

The protein encoded by this gene is a cytokine receptor for interleukin 21 (IL21). It belongs to the type I cytokine receptors, and has been shown to form a heterodimeric receptor complex with the common gamma-chain, a receptor subunit also shared by the receptors for interleukin 2, 4, 7, 9, and 15. This receptor transduces the growth promoting signal of IL21, and is important for the proliferation and differentiation of T cells, B cells, and natural killer (NK) cells. The ligand binding of this receptor leads to the activation of multiple downstream signaling molecules, including JAK1, JAK3, STAT1, and STAT3. Knockout studies of a similar gene in mouse suggest a role for this gene in regulating immunoglobulin production. Three alternatively spliced transcript variants have been described.

Product Info

Amount : 100 µg
Purification : Purified from cell culture supernatant by affinity chromatography
Content : Not Sterile
Storage condition : Store at -20°C for 12 months (Avoid repeated freezing and thawing)

Application Note

ELISA 1/5000-10000;FACS 1/100

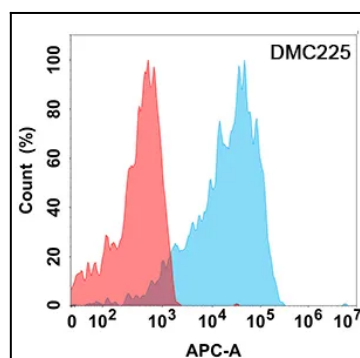


Figure 1. Flow cytometry analysis with Anti-IL21R (DMC225) on Expi293 cells transfected with human IL21R (Blue histogram) or Expi293 transfected with irrelevant protein (Red histogram).

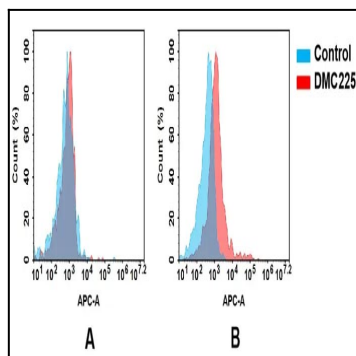


Figure 2. Flow cytometry analysis of antigen binding of anti-human IL21R mAb. (A) It does not bind to 293T cells that do not express IL21R. (B) A clear peak shift was seen compared to the control when incubated with IL21R-expressing Raji cells, indicating strong binding to IL21R. Antibodies were incubated at 5 μ g/mL.