

## 12-9243: Anti-FOLR2 antibody(DMC390), IgG1 Chimeric mAb

<b>Clonality :</b>	Monoclonal
<b>Clone Name :</b>	DMC390
<b>Application :</b>	FACS
<b>Reactivity :</b>	Human
<b>Alternative Name :</b>	BETA-HFR, FBP, FBP/PL-1, FOLR1, FR-BETA, FR-P3, FRbeta

### Description

The protein encoded by this gene is a member of the folate receptor (FOLR) family, and these genes exist in a cluster on chromosome 11. Members of this gene family have a high affinity for folic acid and for several reduced folic acid derivatives, and they mediate delivery of 5-methyltetrahydrofolate to the interior of cells. This protein has a 68% and 79% sequence homology with the FOLR1 and FOLR3 proteins, respectively. Although this protein was originally thought to be specific to placenta, it can also exist in other tissues, and it may play a role in the transport of methotrexate in synovial macrophages in rheumatoid arthritis patients. Multiple transcript variants that encode the same protein have been found for this gene.

### Product Info

<b>Amount :</b>	100 µg
<b>Purification :</b>	Purified from cell culture supernatant by affinity chromatography
<b>Content :</b>	Not Sterile
<b>Storage condition :</b>	Store at -20°C for 12 months (Avoid repeated freezing and thawing)

### Application Note

FACS 1/100

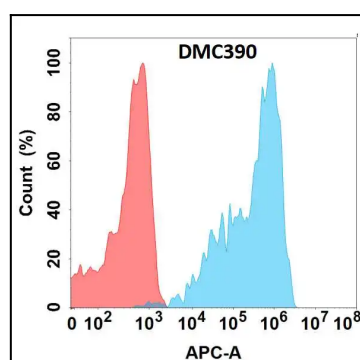


Figure 1. Flow cytometry analysis with Anti-FOLR2 (DMC390) on Expi293 cells transfected with human FOLR2 (Blue histogram) or Expi293 transfected with irrelevant protein (Red histogram).