

12-9247: Anti-CLEC2D antibody(DMC394), IgG1 Chimeric mAb

Clonality :	Monoclonal
Clone Name :	DMC394
Application :	FACS
Reactivity :	Human
Alternative Name :	C-type lectin domain family 2 member D?Lectin-like NK cell receptor?LLT-1?Osteoclast inhibitory lectin

Description

This gene encodes a member of the natural killer cell receptor C-type lectin family. The encoded protein inhibits osteoclast formation and contains a transmembrane domain near the N-terminus as well as the C-type lectin-like extracellular domain. Several alternatively spliced transcript variants have been identified for this gene.

Product Info

Amount :	100 µg
Purification :	Purified from cell culture supernatant by affinity chromatography
Content :	Not Sterile
Storage condition :	Store at -20°C for 12 months (Avoid repeated freezing and thawing)

Application Note

FACS 1/100

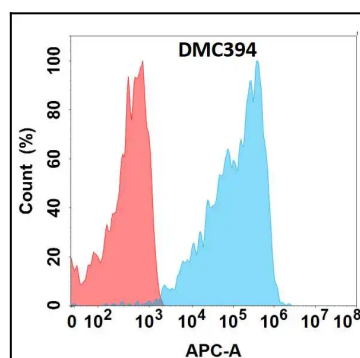


Figure 1. Flow cytometry analysis with Anti-CLEC2D (DMC394) on Expi293 cells transfected with human CLEC2D (Blue histogram) or Expi293 transfected with irrelevant protein (Red histogram).