

## 12-9250: Anti-Trop2 antibody(DM76), Rabbit mAb

**Clonality :** Monoclonal  
**Clone Name :** DM76  
**Application :** ELISA,FACS  
**Reactivity :** Human  
**Alternative Name :** TACSTD2, GA733-1, M1S1, TROP-2,

### Description

This intronless gene encodes a carcinoma-associated antigen. This antigen is a cell surface receptor that transduces calcium signals. Mutations of this gene have been associated with gelatinous drop-like corneal dystrophy.

### Product Info

**Amount :** 100 µg  
**Purification :** Purified from cell culture supernatant by affinity chromatography  
**Content :** Not Sterile  
**Storage condition :** Store at -20°C for 12 months (Avoid repeated freezing and thawing)

### Application Note

ELISA 1/5000-10000;FACS 1/100

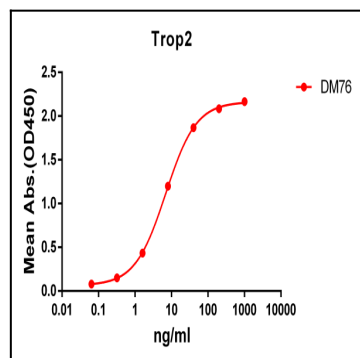


Figure 1. ELISA plate pre-coated by 2 µg/ml (100 µl/well) Human Trop2 protein, mFc-His tagged protein can bind Rabbit anti-Trop2 monoclonal antibody (clone: DM76) in a linear range of 1-100 ng/ml.

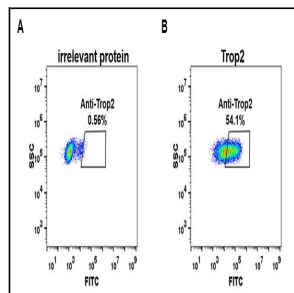


Figure 2. Expi 293 cell line transfected with irrelevant protein (A) and human Trop2 (B) were surface stained with Rabbit anti-Trop2 monoclonal antibody 1 µg/ml (clone: DM76) followed by Alexa 488-conjugated anti-rabbit IgG secondary antibody.

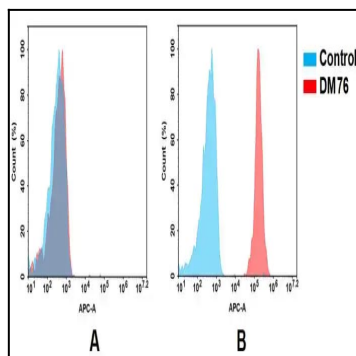


Figure 3. Flow cytometry analysis of antigen binding of rabbit anti-human Trop2 mAb. (A) aAnti-human Trop2 does not bind to 293T cells that do not express Trop2. (B) A clear peak shift of anti-human Trop2 was seen compared to the control when incubated with Trop2-expressing A431 cells, indicating strong binding of anti-human Trop2 to Trop2. Antibodies were incubated at 2  $\mu$ g/mL.