

12-9260: Anti-B7-2 antibody(DM86), Rabbit mAb

Clonality : Monoclonal
Clone Name : DM86
Application : ELISA,FACS
Reactivity : Human
Alternative Name : CD86, B7-2, B70, CD28LG2, LAB72, MGC34413,B72

Description

This gene encodes a type I membrane protein that is a member of the immunoglobulin superfamily. This protein is expressed by antigen-presenting cells, and it is the ligand for two proteins at the cell surface of T cells, CD28 antigen and cytotoxic T-lymphocyte-associated protein 4. Binding of this protein with CD28 antigen is a costimulatory signal for activation of the T-cell. Binding of this protein with cytotoxic T-lymphocyte-associated protein 4 negatively regulates T-cell activation and diminishes the immune response. Alternative splicing results in several transcript variants encoding different isoforms.

Product Info

Amount : 100 µg
Purification : Purified from cell culture supernatant by affinity chromatography
Content : Not Sterile
Storage condition : Store at -20°C for 12 months (Avoid repeated freezing and thawing)

Application Note

ELISA 1/5000-10000;FACS 1/100

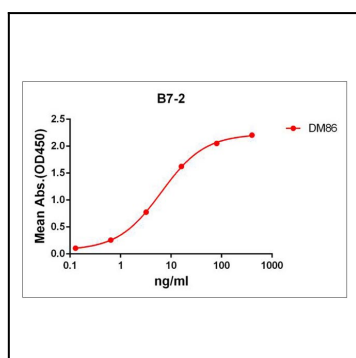


Figure 1. ELISA plate pre-coated by 2 µg/ml (100 µl/well) Human B7-2 protein, mFc-His tagged protein can bind Rabbit anti-B7-2 monoclonal antibody (clone: DM86) in a linear range of 1-100 ng/ml.

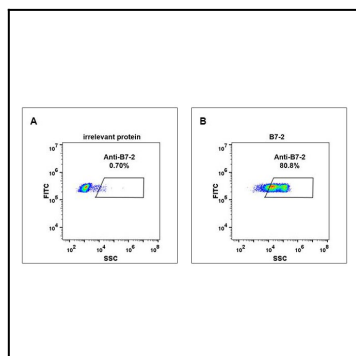


Figure 2. Expi 293 cell line transfected with irrelevant protein (A) and human B7-2 (B) were surface stained with Rabbit anti-B7-2 monoclonal antibody 11 μ g/ml (clone: DM86) followed by Alexa 488-conjugated anti-rabbit IgG secondary antibody.