

## 12-9294: Anti-CEACAM5 antibody(DM120), Rabbit mAb

<b>Clonality :</b>	Monoclonal
<b>Clone Name :</b>	DM120
<b>Application :</b>	ELISA,FACS
<b>Reactivity :</b>	Human
<b>Alternative Name :</b>	CEACAM-5,CD66e,CEA,Meconium antigen 100

### Description

This gene encodes a cell surface glycoprotein that represents the founding member of the carcinoembryonic antigen (CEA) family of proteins. The encoded protein is used as a clinical biomarker for gastrointestinal cancers and may promote tumor development through its role as a cell adhesion molecule. Additionally, the encoded protein may regulate differentiation, apoptosis, and cell polarity. This gene is present in a CEA family gene cluster on chromosome 19. Alternative splicing results in multiple transcript variants.

### Product Info

<b>Amount :</b>	100 µg
<b>Purification :</b>	Purified from cell culture supernatant by affinity chromatography
<b>Content :</b>	Not Sterile
<b>Storage condition :</b>	Store at -20°C for 12 months (Avoid repeated freezing and thawing)

### Application Note

ELISA 1/5000-10000;FACS 1/100

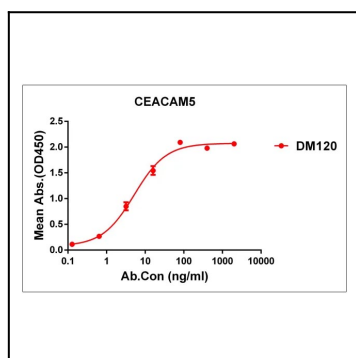


Figure 1. ELISA plate pre-coated by 1 µg/ml (100 µl/well) Human CEACAM5 protein, His tagged protein can bind Rabbit anti-CEACAM5 monoclonal antibody (clone: DM120) in a linear range of 0.1-50 ng/ml.

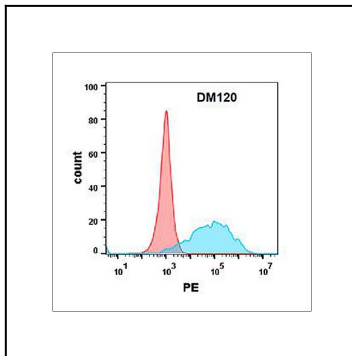


Figure 2. Flow cytometry analysis with Anti-CEACAM5 (DM120) on Expi293 cells transfected with human CEACAM5 (Blue histogram) or Expi293 transfected with irrelevant protein (Red histogram).