

## 12-9323: Anti-SELP antibody(DM150), Rabbit mAb

<b>Clonality :</b>	Monoclonal
<b>Clone Name :</b>	DM150
<b>Application :</b>	ELISA,FACS
<b>Reactivity :</b>	Human
<b>Alternative Name :</b>	P-Selectin,CD62P,SELP,GMP-140

### Description

This gene encodes a 140 kDa protein that is stored in the alpha-granules of platelets and Weibel-Palade bodies of endothelial cells. This protein redistributes to the plasma membrane during platelet activation and degranulation and mediates the interaction of activated endothelial cells or platelets with leukocytes. The membrane protein is a calcium-dependent receptor that binds to sialylated forms of Lewis blood group carbohydrate antigens on neutrophils and monocytes. Alternative splice variants may occur but are not well documented.

### Product Info

<b>Amount :</b>	100 µg
<b>Purification :</b>	Purified from cell culture supernatant by affinity chromatography
<b>Content :</b>	Not Sterile
<b>Storage condition :</b>	Store at -20°C for 12 months (Avoid repeated freezing and thawing)

### Application Note

ELISA 1/5000-10000;FACS 1/100

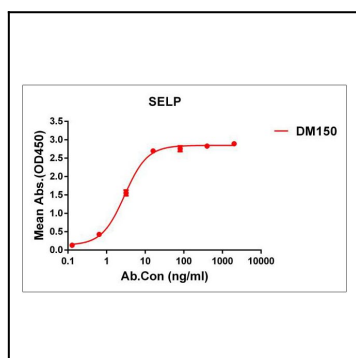


Figure 1. ELISA plate pre-coated by 1 µg/ml (100 µl/well) Human SELP protein, hFc tagged protein can bind Rabbit anti-SELP monoclonal antibody(clone: DM150) in a linear range of 1-10 ng/ml.

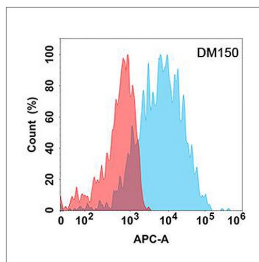


Figure 2. Flow cytometry analysis with Anti-SELP (DM150) on Expi293 cells transfected with human SELP (Blue histogram) or Expi293 transfected with irrelevant protein (Red histogram).