

## 12-9325: Anti-IL6R antibody(DM152), Rabbit mAb

<b>Clonality :</b>	Monoclonal
<b>Clone Name :</b>	DM152
<b>Application :</b>	ELISA,FACS
<b>Reactivity :</b>	Human
<b>Alternative Name :</b>	CD126, gp80, IL-6R-1, IL-6RA, IL6Q, IL6RA, IL6RQ

### Description

This gene encodes a subunit of the interleukin 6 (IL6) receptor complex. Interleukin 6 is a potent pleiotropic cytokine that regulates cell growth and differentiation and plays an important role in the immune response. The IL6 receptor is a protein complex consisting of this protein and interleukin 6 signal transducer (IL6ST/GP130/IL6-beta), a receptor subunit also shared by many other cytokines. Dysregulated production of IL6 and this receptor are implicated in the pathogenesis of many diseases, such as multiple myeloma, autoimmune diseases and prostate cancer. Alternatively spliced transcript variants encoding distinct isoforms have been reported. A pseudogene of this gene is found on chromosome 9.

### Product Info

<b>Amount :</b>	100 µg
<b>Purification :</b>	Purified from cell culture supernatant by affinity chromatography
<b>Content :</b>	Not Sterile
<b>Storage condition :</b>	Store at -20°C for 12 months (Avoid repeated freezing and thawing)

### Application Note

ELISA 1/5000-10000;FACS 1/100

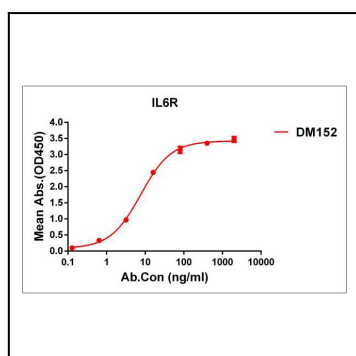


Figure 1. ELISA plate pre-coated by 1 µg/ml (100 µl/well) Human IL6R protein, His tagged protein can bind Rabbit anti-IL6R monoclonal antibody(clone: DM152) in a linear range of 1-100 ng/ml.

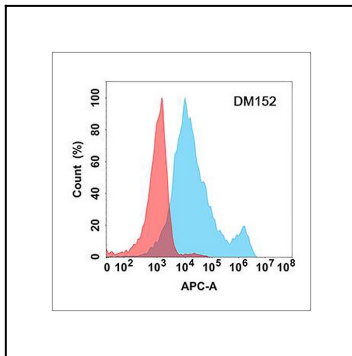


Figure 2. Flow cytometry analysis with Anti-IL-6R (DM152) on Expi293 cells transfected with human IL-6R (Blue histogram) or Expi293 transfected with irrelevant protein (Red histogram).