

## 12-9332: Anti-NTB-A antibody(DM159), Rabbit mAb

**Clonality :** Monoclonal  
**Clone Name :** DM159  
**Application :** ELISA,FACS  
**Reactivity :** Human  
**Alternative Name :** NTB-A,SLAMF6,Ly108,NK-T-B-antigen,CD352,KALI

### Description

The protein encoded by this gene is a type I transmembrane protein, belonging to the CD2 subfamily of the immunoglobulin superfamily. This encoded protein is expressed on Natural killer (NK), T, and B lymphocytes. It undergoes tyrosine phosphorylation and associates with the Src homology 2 domain-containing protein (SH2D1A) as well as with SH2 domain-containing phosphatases (SHPs). It functions as a coreceptor in the process of NK cell activation. It can also mediate inhibitory signals in NK cells from X-linked lymphoproliferative patients. Alternative splicing results in multiple transcript variants encoding distinct isoforms.

### Product Info

**Amount :** 100 µg  
**Purification :** Purified from cell culture supernatant by affinity chromatography  
**Content :** Not Sterile  
**Storage condition :** Store at -20°C for 12 months (Avoid repeated freezing and thawing)

### Application Note

ELISA 1/5000-10000;FACS 1/100

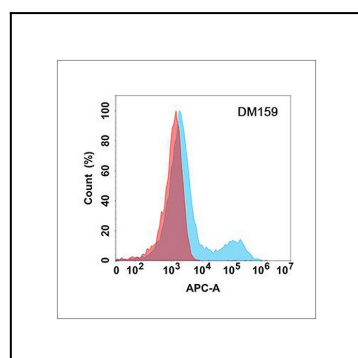


Figure 1. Flow cytometry analysis with Anti-NTB-A (DM159) on Expi293 cells transfected with human NTB-A (Blue histogram) or Expi293 transfected with irrelevant protein (Red histogram).