

12-9333: Anti-LAG3 antibody(DM160), Rabbit mAb

Clonality : Monoclonal
Clone Name : DM160
Application : ELISA,FACS
Reactivity : Human
Alternative Name : LAG-3, CD223

Description

Lymphocyte-activation protein 3 belongs to Ig superfamily and contains 4 extracellular Ig-like domains. The LAG3 gene contains 8 exons. The sequence data, exon/intron organization, and chromosomal localization all indicate a close relationship of LAG3 to CD4. [provided by RefSeq, Jul 2008]

Product Info

Amount : 100 µg
Purification : Purified from cell culture supernatant by affinity chromatography
Content : Not Sterile
Storage condition : Store at -20°C for 12 months (Avoid repeated freezing and thawing)

Application Note

ELISA 1/5000-10000;FACS 1/100

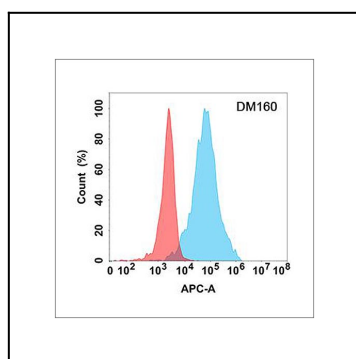


Figure 1. Flow cytometry analysis with Anti-LAG3 (DM160) on Expi293 cells transfected with human LAG3 (Blue histogram) or Expi293 transfected with irrelevant protein (Red histogram).