

12-9334: Anti-CD5 antibody(DM161), Rabbit mAb

Clonality : Monoclonal
Clone Name : DM161
Application : ELISA,FACS
Reactivity : Human
Alternative Name : CD5,LEU1

Description

This gene encodes a member of the scavenger receptor cysteine-rich (SRCR) superfamily. Members of this family are secreted or membrane-anchored proteins mainly found in cells associated with the immune system. This protein is a type-I transmembrane glycoprotein found on the surface of thymocytes, T lymphocytes and a subset of B lymphocytes. The encoded protein contains three SRCR domains and may act as a receptor to regulate T-cell proliferation. Alternative splicing results in multiple transcript variants encoding different isoforms.

Product Info

Amount : 100 µg
Purification : Purified from cell culture supernatant by affinity chromatography
Content : Not Sterile
Storage condition : Store at -20°C for 12 months (Avoid repeated freezing and thawing)

Application Note

ELISA 1/5000-10000;FACS 1/100

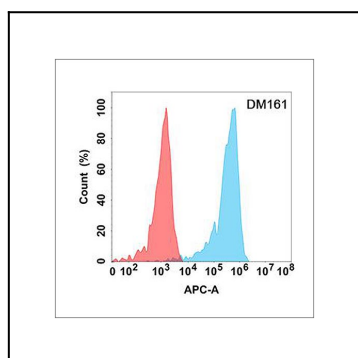


Figure 1. Flow cytometry analysis with Anti-CD5 (DM161) on Expi293 cells transfected with human CD5 (Blue histogram) or Expi293 transfected with irrelevant protein (Red histogram).