

## 12-9337: Anti-CLEC12A antibody(DM165), Rabbit mAb

**Clonality :** Monoclonal  
**Clone Name :** DM165  
**Application :** ELISA,FACS  
**Reactivity :** Human  
**Alternative Name :** CLEC12A,MICL,CLL-1,CLL1,DCAL2,DCAL-2,CD371

### Description

This gene encodes a member of the C-type lectin/C-type lectin-like domain (CTL/CTLD) superfamily. Members of this family share a common protein fold and have diverse functions, such as cell adhesion, cell-cell signaling, glycoprotein turnover, and roles in inflammation and immune response. The protein encoded by this gene is a negative regulator of granulocyte and monocyte function. Several alternatively spliced transcript variants of this gene have been described, but the full-length nature of some of these variants has not been determined. This gene is closely linked to other CTL/CTLD superfamily members in the natural killer gene complex region on chromosome 12p13.

### Product Info

**Amount :** 100 µg  
**Purification :** Purified from cell culture supernatant by affinity chromatography  
**Content :** Not Sterile  
**Storage condition :** Store at -20°C for 12 months (Avoid repeated freezing and thawing)

### Application Note

ELISA 1/5000-10000;FACS 1/100

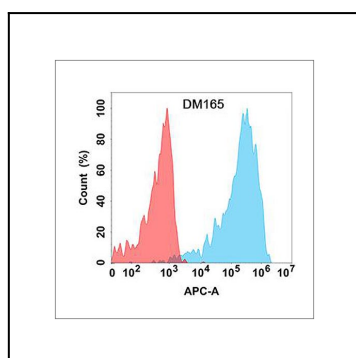


Figure 1. Flow cytometry analysis with Anti-CLEC12A (DM165) on Expi293 cells transfected with human CLEC12A (Blue histogram) or Expi293 transfected with irrelevant protein (Red histogram).