

12-9341: Anti-PDL2 antibody(DM169), Rabbit mAb

Clonality : Monoclonal
Clone Name : DM169
Application : ELISA,FACS
Reactivity : Human
Alternative Name : B7DC, bA574F11.2, Btdc, CD273, PD-L2, PDCD1L2, PDL2

Description

Involved in the costimulatory signal, essential for T-cell proliferation and IFNG production in a PDCD1-independent manner. Interaction with PDCD1 inhibits T-cell proliferation by blocking cell cycle progression and cytokine production (By similarity).

Product Info

Amount : 100 µg
Purification : Purified from cell culture supernatant by affinity chromatography
Content : Not Sterile
Storage condition : Store at -20°C for 12 months (Avoid repeated freezing and thawing)

Application Note

ELISA 1/5000-10000;FACS 1/100

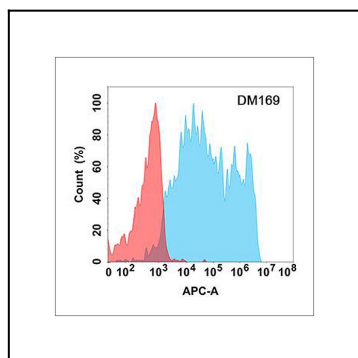


Figure 1. Flow cytometry analysis with Anti-PDL2 (DM169) on Expi293 cells transfected with human PDL2 (Blue histogram) or Expi293 transfected with irrelevant protein (Red histogram).