

## 12-9349: Anti-PD-1 antibody(DM177), Rabbit mAb

**Clonality :** Monoclonal  
**Clone Name :** DM177  
**Application :** ELISA,FACS  
**Reactivity :** Human  
**Alternative Name :** PDCD1, PD1, CD279, SLEB2

### Description

This protein is expressed in pro-B-cells and is thought to play a role in their differentiation. In mice, expression of this gene is induced in the thymus when anti-CD3 antibodies are injected and large numbers of thymocytes undergo apoptosis. Mice deficient for this gene bred on a BALB/c background developed dilated cardiomyopathy and died from congestive heart failure. These studies suggest that this gene product may also be important in T cell function and contribute to the prevention of autoimmune diseases.

### Product Info

**Amount :** 100 µg  
**Purification :** Purified from cell culture supernatant by affinity chromatography  
**Content :** Not Sterile  
**Storage condition :** Store at -20°C for 12 months (Avoid repeated freezing and thawing)

### Application Note

ELISA 1/5000-10000;FACS 1/100

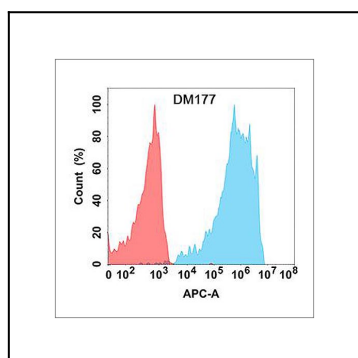


Figure 1. Flow cytometry analysis with Anti-PD-1 (DM177) on Expi293 cells transfected with human PD-1 (Blue histogram) or Expi293 transfected with irrelevant protein (Red histogram).