

12-9351: Anti-CLDN18.2 antibody(DM179), Rabbit mAb

Clonality : Monoclonal
Clone Name : DM179
Application : ELISA,FACS
Reactivity : Human
Alternative Name : claudin18.2

Description

CLDN18 belongs to the large claudin family of proteins, which form tight junction strands in epithelial cells.

Product Info

Amount : 100 µg
Purification : Purified from cell culture supernatant by affinity chromatography
Content : Not Sterile
Storage condition : Store at -20°C for 12 months (Avoid repeated freezing and thawing)

Application Note

ELISA 1/5000-10000;FACS 1/100

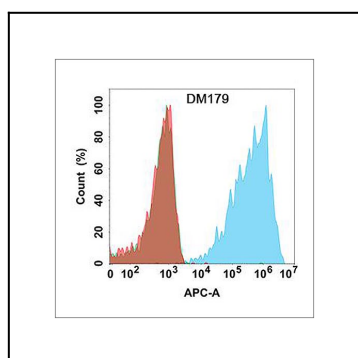


Figure 1. Flow cytometry analysis with Anti-CLDN18.2 (DM179) on Expi293 cells transfected with human CLDN18.2 (Blue histogram) or Expi293 transfected with human CLDN18.1 (Green histogram) or Expi293 transfected with irrelevant protein (Red histogram).