

12-9355: Anti-KLRG1 antibody(DM184), Rabbit mAb

Clonality : Monoclonal
Clone Name : DM184
Application : ELISA,FACS
Reactivity : Human
Alternative Name : CLEC15A, MAFA, MAFAL

Description

Natural killer (NK) cells are lymphocytes that can mediate lysis of certain tumor cells and virus-infected cells without previous activation. They can also regulate specific humoral and cell-mediated immunity. The protein encoded by this gene belongs to the killer cell lectin-like receptor (KLR) family, which is a group of transmembrane proteins preferentially expressed in NK cells. Studies in mice suggested that the expression of this gene may be regulated by MHC class I molecules.

Product Info

Amount : 100 µg
Purification : Purified from cell culture supernatant by affinity chromatography
Content : Not Sterile
Storage condition : Store at -20°C for 12 months (Avoid repeated freezing and thawing)

Application Note

ELISA 1/5000-10000;FACS 1/100

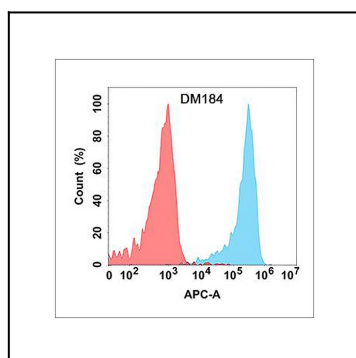


Figure 1. Flow cytometry analysis with Anti-KLRG1 (DM184) on Expi293 cells transfected with human KLRG1 (Blue histogram) or Expi293 transfected with irrelevant protein (Red histogram).