

## 12-9378: Anti-DKK1 antibody(DM210), Rabbit mAb

**Clonality :** Monoclonal  
**Clone Name :** DM210  
**Application :** ELISA,FACS  
**Reactivity :** Human  
**Alternative Name :** DKK-1, SK

### Description

This gene encodes a member of the dickkopf family of proteins. Members of this family are secreted proteins characterized by two cysteine-rich domains that mediate protein-protein interactions. The encoded protein binds to the LRP6 co-receptor and inhibits beta-catenin-dependent Wnt signaling. This gene plays a role in embryonic development and may be important in bone formation in adults. Elevated expression of this gene has been observed in numerous human cancers and this protein may promote proliferation, invasion and growth in cancer cell lines.

### Product Info

**Amount :** 100 µg  
**Purification :** Purified from cell culture supernatant by affinity chromatography  
**Content :** Not Sterile  
**Storage condition :** Store at -20°C for 12 months (Avoid repeated freezing and thawing)

### Application Note

ELISA 1/5000-10000;FACS 1/100

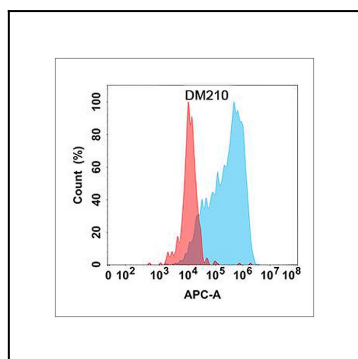


Figure 1. Flow cytometry analysis with Anti-DKK1 (DM210) on Expi293 cells transfected with human DKK1 (Blue histogram) or Expi293 transfected with irrelevant protein (Red histogram).