

## 12-9384: Anti-IL18RA antibody(DM218), Rabbit mAb

**Clonality :** Monoclonal  
**Clone Name :** DM218  
**Application :** ELISA,FACS  
**Reactivity :** Human  
**Alternative Name :** CD218a, CDw218a, IL-1Rrp, IL1RRP, IL18RA

### Description

The protein encoded by this gene is a cytokine receptor that belongs to the interleukin 1 receptor family. This receptor specifically binds interleukin 18 (IL18), and is essential for IL18 mediated signal transduction. IFN-alpha and IL12 are reported to induce the expression of this receptor in NK and T cells. This gene along with four other members of the interleukin 1 receptor family, including IL1R2, IL1R1, ILRL2 (IL-1Rrp2), and IL1RL1 (T1/ST2), form a gene cluster on chromosome 2q. Alternatively spliced transcript variants encoding different isoforms have been found for this gene.

### Product Info

**Amount :** 100 µg  
**Purification :** Purified from cell culture supernatant by affinity chromatography  
**Content :** Not Sterile  
**Storage condition :** Store at -20°C for 12 months (Avoid repeated freezing and thawing)

### Application Note

ELISA 1/5000-10000;FACS 1/100

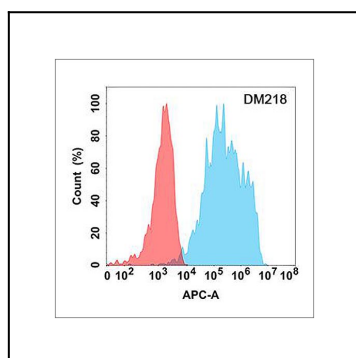


Figure 1. Flow cytometry analysis with Anti-IL18RA (DM218) on Expi293 cells transfected with human IL18RA (Blue histogram) or Expi293 transfected with irrelevant protein (Red histogram).